

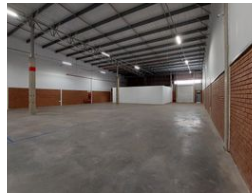


Kobus Louw
0745422026
kobus@newpointproperty.co.za

Contact Head Office

010 0354431

Office 40A
Eden Meadows Complex
1 Van Riebeeck Avenue
Greenstone
1609



R46,161 pm

Gross Monthly Rental R46,161 Excl. VAT

0 9

669m² Industrial Unit with Warehouse & Office Balance

This well-designed 669m² unit offers an ideal 80/20 split between warehouse and office space, perfectly suited for light industrial, storage, or distribution operations. It features a large roller shutter door for easy loading, excellent natural lighting, and a 60-amp three-phase power supply to keep your operations running efficiently.

Located in a secure park with 24-hour access control and CCTV, the property offers 15 dedicated parking bays and three bathrooms for convenience. With quick access to major transport routes, this facility combines security, functionality, and

Features

Zoning Industrial

Interior

Floor Loading Cap.	1 Tn/m ²
Power 3 Phase	Yes
Power Amps	60

Exterior

Security	Yes
Open Parking Bays	9

Sizes

Floor Size	669m ²
Land Size	30,000m ²

