



Kobus Louw
0745422026
kobus@newpointproperty.co.za

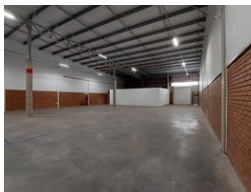
Contact Head Office

010 0354431

Office 40A
Eden Meadows Complex
1 Van Riebeeck Avenue
Greenstone
1609



Web Ref CL13673



R46,161 pm

Gross Monthly Rental R46,161 Excl. VAT



0



9

669m² Warehouse with Offices in Secure Park – Practical & Efficient Layout

This 669m² industrial unit offers an ideal 80/20 split between warehouse and office space, making it perfect for light industrial, storage, or distribution use. A large roller shutter door allows for easy loading, while natural lighting and a 60-amp three-phase power supply ensure smooth day-to-day operations.

The property includes 15 dedicated parking bays, three bathrooms, and is located in a secure park with 24-hour access control and CCTV surveillance. Conveniently positioned near major transport routes, this facility offers both security and accessibility.

Features

Zoning Industrial

Interior

Floor Loading Cap.	1 Tn/m ²
Power 3 Phase	Yes
Power Amps	60

Exterior

Security	Yes
Open Parking Bays	9

Sizes

Floor Size	669m ²
Land Size	30,000m ²

