



Nathan Broodryk
0844223210
nathan@newpointproperty.co.za

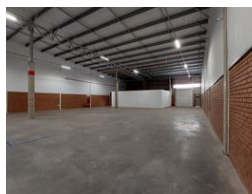
Contact Head Office

010 0354431

Office 40A
Eden Meadows Complex
1 Van Riebeeck Avenue
Greenstone
1609



Web Ref NB669B2Cv148relst1



R46,161 pm

Gross Monthly Rental R46,161 Excl. VAT



0



9

669m² warehouse available to let with offices

This versatile 669m² facility offers an optimal blend of warehouse and office space, with an efficient 80/20 split designed to support smooth operations. The warehouse is accessed via a large roller shutter door, allowing for easy movement of goods and equipment, while natural lighting enhances the workspace environment. With a reliable 60-amp, three-phase power supply, the space is well-suited for various industrial activities, including light manufacturing, storage, or distribution.

The property features 15 dedicated parking bays, providing ample space for staff and visitors, as well as three conveniently located bathrooms to support daily operations. Security is a top priority, with 24-hour access control and surveillance offering peace of

Features

Zoning Industrial

Interior

Floor Loading Cap. 1 Tn/m²
Power 3 Phase Yes
Power Amps 60

Exterior

Security Yes
Open Parking Bays 9

Sizes

Floor Size 669m²
Land Size 30,000m²

