



Marcel Carneiro
Candidate Property
Practitioner
Registered with PPRA
(FFC 120 075 3)
0846932233

marcel@newpointproperty.co.za

Contact Head Office

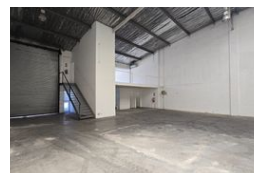
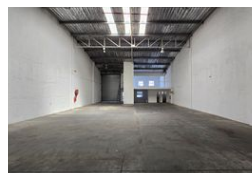
010 0354431

Office 40A
Eden Meadows Complex
1 Van Riebeeck Avenue
Greenstone
1609

460m² Warehouse To Let in Spartan



Web Ref CL13652



R32,750 pm

Gross Monthly Rental R32,750 Excl. VAT
Monthly Rates R1 Excl. VAT

Monthly Levy R1 Excl. VAT

2 2

460m² Industrial Unit To Let in Spartan – Ideal for Logistics & Light Manufacturing

Located in the bustling industrial node of Spartan, this well-maintained 460m² warehouse offers a practical and secure solution for businesses seeking efficiency and accessibility. The unit boasts excellent height to the eaves, abundant natural light, and a large roller shutter door for easy access. With 60 amps of three-phase power, it's well-suited for various light industrial or storage operations.

The office component includes a professional reception area and open-plan workspace, supported by male and female ablutions and a kitchenette. The property is set in a secure park with ample parking and excellent proximity to O.R. Tambo International Airport and major highways, including the N3, R21, and R24—making it a strategic location for businesses focused on logistics,

Features

Zoning Industrial

Interior

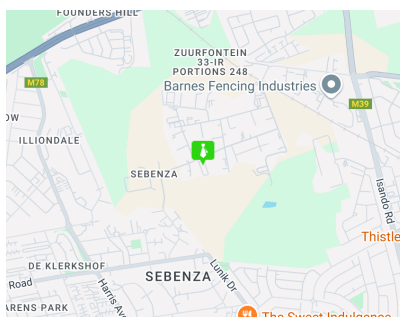
Floor Loading Cap. 1 Tn/m²
Power 3 Phase Yes
Power Amps 60

Exterior

Security Yes
Covered Parking Bays 2
Open Parking Bays 2

Sizes

Floor Size 460m²
Land Size 460m²
Building Height 8m



<https://www.newpointproperty.co.za>