



Marcel Carneiro
Candidate Property
Practitioner
Registered with PPRA
(FFC 120 075 3)
0846932233

marcel@newpointproperty.co.za

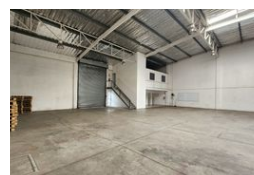
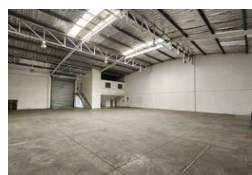
Contact Head Office

010 0354431

Office 40A
Eden Meadows Complex
1 Van Riebeeck Avenue
Greenstone
1609

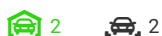


Web Ref CL12844



R42,750 pm

Gross Monthly Rental R42,750 Excl. VAT **Monthly Rates** R1 Excl. VAT



Secure 640m² Warehouse in Prime Spartan Location with Easy Highway & Airport Access

Available to let in the sought-after industrial node of Spartan, this well-maintained 640m² warehouse offers an efficient and secure space ideal for light manufacturing, storage, or distribution. The unit features excellent height to the eaves, great natural lighting, and a large roller shutter door for seamless loading and offloading. With 60 amps of three-phase power, it caters to a range of operational needs within a clean, professional park setting.

The office component includes a welcoming reception area and open-plan offices, complemented by male and female ablutions and a kitchenette for staff comfort. The park offers ample parking, while its prime location ensures outstanding connectivity to the

Features

Zoning Industrial

Interior

Floor Loading Cap. 1 Tn/m²
Power 3 Phase Yes
Power Amps 60

Exterior

Security Yes
Covered Parking Bays 2
Open Parking Bays 2

Sizes

Floor Size 640m²
Land Size 640m²
Building Height 8m

Extras

Security Estate

