



Marcel Carneiro
Candidate Property
Practitioner
Registered with PPRA
(FFC 120 075 3)
0846932233

marcel@newpointproperty.co.za

Contact Head Office

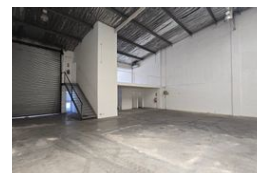
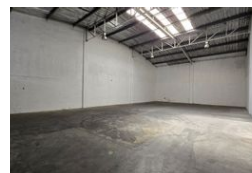
010 0354431

Office 40A
Eden Meadows Complex
1 Van Riebeeck Avenue
Greenstone
1609

460m² Warehouse To Let in Spartan



Web Ref MC460TLSpar



R32,750 pm

Gross Monthly Rental R32,750 Excl. VAT
Monthly Rates R1 Excl. VAT

Monthly Levy R1 Excl. VAT

2 2

460sqm Industrial warehouse in a secure business park to let in Spartan

Situated within the highly sought-after industrial hub of Spartan, this meticulously maintained 460 sqm industrial warehouse, nestled within a secure park, is now available for let. Boasting an impressive eaves height and abundant natural lighting, the warehouse creates an optimal workspace environment. Effortless entry to the warehouse is facilitated by a sizable front-facing roller shutter door, and the property is supplied with a 60-amp three-phase power to accommodate diverse operational requirements.

The office segment of the property features an open and inviting reception area with open plan offices. This professional space is complemented by male and female ablution facilities and a convenient kitchenette. Adequate parking space is thoughtfully

Features

Zoning Industrial

Interior

Floor Loading Cap. 1 Tn/m²
Power 3 Phase Yes
Power Amps 60

Exterior

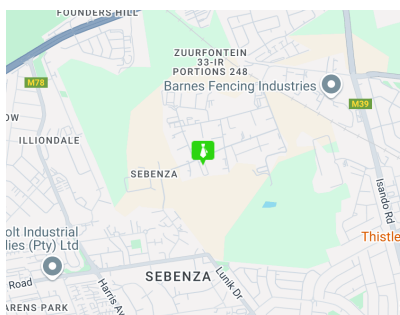
Security Yes
Covered Parking Bays 2
Open Parking Bays 2

Sizes

Floor Size 460m²
Land Size 460m²
Building Height 8m

Extras

Security Estate 24 Hour Access



<https://www.newpointproperty.co.za>