



**Kobus Louw**  
0745422026  
kobus@newpointproperty.co.za

Contact Head Office

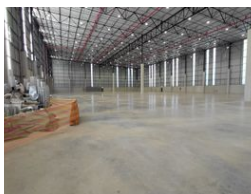
010 0354431

Office 40A  
Eden Meadows Complex  
1 Van Riebeeck Avenue  
Greenstone  
1609

7,553m<sup>2</sup> Warehouse To Let in Pomona



Web Ref TL-JTR-7553KL



R626,900 pm

Gross Monthly Rental R626,900 Excl. VAT



0



60

## Brand New 7553sqm Warehouse in Sought After Pomona

This brand-new 7,553sqm AAA-grade warehouse sets a new standard for modern logistics and distribution facilities. Purpose-built to accommodate high-efficiency operations, the warehouse is equipped with six roller shutter doors, ensuring smooth and flexible goods movement. The expansive layout and high-clearance design make it ideal for large-scale storage, racking systems, and rapid distribution. The facility also features a fully integrated sprinkler system throughout the warehouse, providing essential fire protection and aligning with the highest safety standards.

Supporting the operational side is a generous office component, designed to offer comfort and functionality for management and administrative teams. Multiple bathroom facilities are available to cater to both office and warehouse staff, ensuring convenience

## Features

**Zoning** Industrial

### Interior

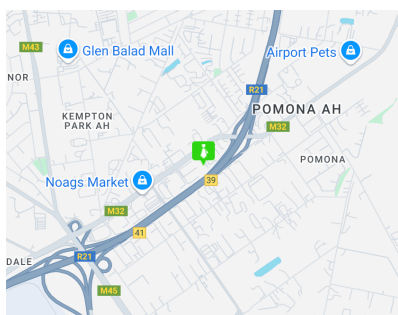
Power 3 Phase	Yes
Power Amps	150

### Exterior

Security	Yes
Open Parking Bays	60

### Sizes

Floor Size	7,553m <sup>2</sup>
Land Size	20,000m <sup>2</sup>
Building Height	15m



<https://www.newpointproperty.co.za>