



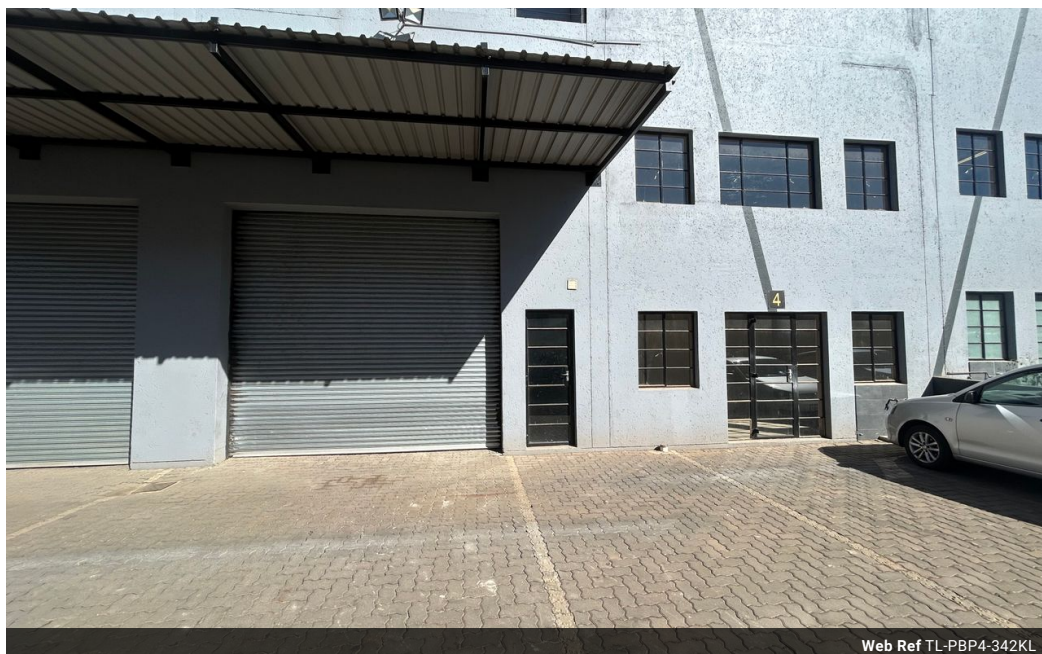
Kobus Louw
0745422026
kobus@newpointproperty.co.za

Contact Head Office

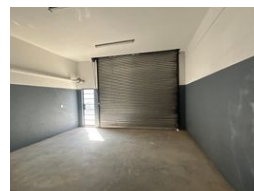
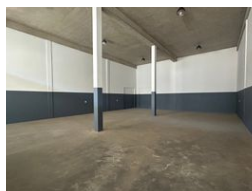
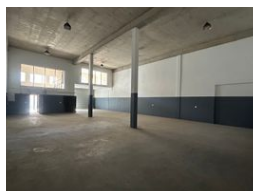
010 0354431

Office 40A
Eden Meadows Complex
1 Van Riebeeck Avenue
Greenstone
1609

342m² Warehouse To Let in Pomona



Web Ref TL-PBP4-342KL



R30,780 pm

Gross Monthly Rental R30,780 Excl. VAT Monthly Levy R5,130 Excl. VAT



Neat 342sqm Unit To Let in Pomona

This neat 342sqm industrial unit is located in a secure, access-controlled business park in the sought-after Pomona area. The warehouse is clean and well-maintained, offering a practical and efficient space for light industrial or distribution operations. It includes a dedicated reception area, creating a professional first impression for clients and visitors. The unit is designed with functionality in mind, featuring a kitchen and separate bathroom facilities for both office and warehouse staff, ensuring comfort and convenience for all employees.

Upstairs, the unit offers two spacious open-plan offices that overlook the warehouse floor, ideal for operational oversight or management use. The offices receive plenty of natural light and provide a flexible layout to suit various business needs. With its

Features

Zoning Industrial

Interior

Power 3 Phase Yes
Power Amps 63

Exterior

Security Yes
Open Parking Bays 3

Sizes

Floor Size 342m²
Land Size 20,000m²
Building Height 10m

