



Kobus Louw
0745422026
kobus@newpointproperty.co.za

Contact Head Office

010 0354431

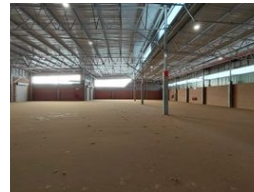
Office 40A
Eden Meadows Complex
1 Van Riebeeck Avenue
Greenstone
1609

1,773m² Warehouse To Let in Pomona

NEW



Web Ref TL1773OH



R134,816 pm

Gross Monthly Rental R134,816 Excl. VAT
Monthly Rates R23,468 Excl. VAT
Monthly Levy R28,737.2 Excl. VAT

0 20

Sizeable 1773 sqm warehouse with 4 roller shutter doors.

This expansive 1,773-square-metre industrial property is immediately available and well-suited for businesses requiring both scale and functionality. The unit features a neat reception area that doubles as an open-plan office space, offering a professional yet practical environment for administrative operations. Designed with everyday convenience in mind, the property includes a fully equipped kitchen and three separate toilets to accommodate staff and visitors.

The warehouse section is built for efficiency, boasting four large roller shutter doors that are suitable for super link trucks, ensuring smooth and flexible access for logistics and high-volume deliveries. The generous floor space and excellent vehicle accessibility

Features

Zoning Industrial

Interior

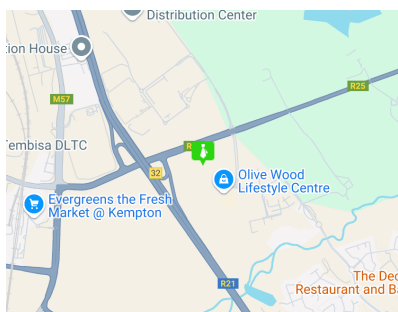
Power 3 Phase	Yes
Power Amps	100

Exterior

Security	Yes
Open Parking Bays	20

Sizes

Floor Size	1,773m ²
Land Size	20,000m ²
Building Height	7m



<https://www.newpointproperty.co.za>