



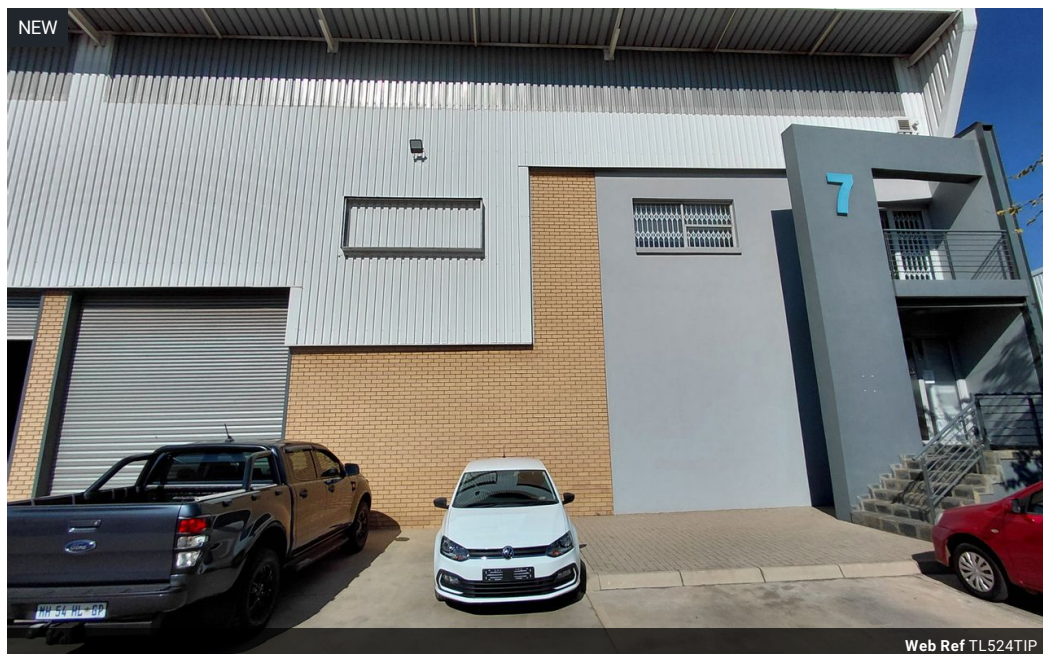
**Kobus Louw**  
0745422026  
kobus@newpointproperty.co.za

Contact Head Office

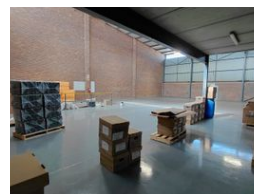
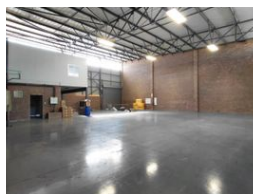
010 0354431

Office 40A  
Eden Meadows Complex  
1 Van Riebeeck Avenue  
Greenstone  
1609

524m<sup>2</sup> Warehouse To Let in Pomona



Web Ref TL524TIP



R47,160 pm

Gross Monthly Rental R47,160 Excl. VAT

0 5

## Prime, secure warehouse space in Transit Industrial

This 524-square-metre industrial property offers a well-balanced combination of functionality and professional appeal, making it ideal for a wide range of business operations. The unit features a neat and welcoming reception area, creating a strong first impression for clients and visitors. A spacious open-plan office area overlooks the warehouse, allowing for seamless oversight and coordination between administrative and operational teams.

The warehouse is equipped with a large roller shutter door, providing convenient access for trucks and facilitating smooth loading and unloading. Additional amenities include a staff kitchen and three separate toilets, enhancing day-to-day comfort for employees. Designed for efficiency and practicality, this versatile space is immediately available and ready to support your

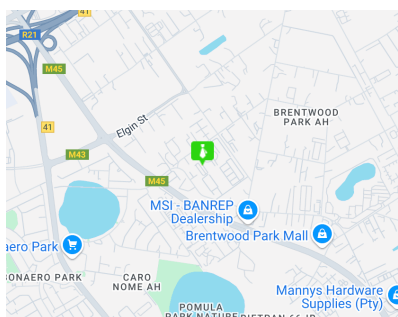
## Features

**Building Name** 7  
**Zoning** Industrial

**Interior**  
Power 3 Phase Yes  
Power Amps 100

**Exterior**  
Security Yes  
Open Parking Bays 5

**Sizes**  
Floor Size 524m<sup>2</sup>  
Land Size 10,000m<sup>2</sup>  
Building Height 7m



<https://www.newpointproperty.co.za>