



Donovan Saunders

Candidate Property Practitioner
Registered with PPRA
(FFC 121 151 8)

0743713355

donovan@newpointproperty.co.za

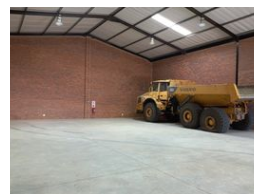
Contact Head Office

010 0354431

Office 40A
Eden Meadows Complex
1 Van Riebeeck Avenue
Greenstone
1609



Web Ref DSTL530P8



R42,800 pm

Gross Monthly Rental R42,800 Excl. VAT
Monthly Rates R1 Excl. VAT

Monthly Levy R1 Excl. VAT



0



4

530sqm Industrial warehouse to let in Pomona!

This compact industrial warehouse, covering approximately 530sqm is available to let in Pomona! The park is safe and secure and is within the highly strategically located in Pomona and offers convenient amenities such as a diesel tank for tenants and a truck wash bay. The unit features a small office section, including a reception area and individual offices, with the potential to add more offices on the mezzanine floor.

The warehouse boasts an automated 4.8m on-grade roller shutter door and LED lighting throughout the facility as well as natural lighting flowing through the entire space. Additional amenities include a small kitchenette for warehouse and office staff and well-

Features

Zoning Industrial

Interior

Power 3 Phase	Yes
Power Amps	63

Exterior

Security	Yes
Open Parking Bays	4

Sizes

Floor Size	530m ²
Land Size	530m ²
Building Height	7m

