



Donovan Saunders

Candidate Property Practitioner
Registered with PPRA
(FFC 121 151 8)

0743713355

donovan@newpointproperty.co.za

Contact Head Office

010 0354431

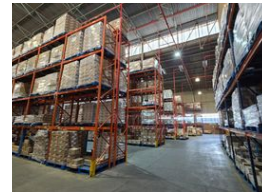
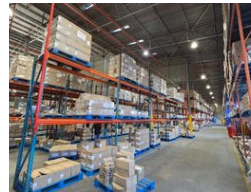
Office 40A
Eden Meadows Complex
1 Van Riebeeck Avenue
Greenstone
1609

5,994m² Warehouse To Let in Isando

NEW



Web Ref DS5994302CL



R359,640 pm

Gross Monthly Rental R359,640 Excl. VAT
Monthly Rates R1 Excl. VAT

Monthly Levy R1 Excl. VAT



High-Spec 5,994m² Warehouse with Cold Chain Capability in Prime Location

This fully secure, ASIB-compliant 5,994m² warehouse is perfect for logistics, cold chain, or high-volume storage operations. Featuring two cold rooms—including a freezer reaching -18°C—comprehensive in-rack sprinkler protection, multiple roller shutter doors, excellent internal height, and a 300-amp three-phase power supply, the facility is designed for seamless and efficient operations.

The property offers dual superlink truck access and includes double-volume office space with reception, boardrooms, and a mix of executive and open-plan areas. Staff amenities such as a canteen, kitchen, and ablutions enhance functionality. Don't miss this

Features

Zoning Industrial

Interior

Floor Loading Cap.	5 Tn/m ²
Air Conditioning	Yes
Power 3 Phase	Yes
Power Amps	300

Exterior

Security	Yes
Covered Parking Bays	3
Open Parking Bays	20

Sizes

Floor Size	5,994m ²
Land Size	8,000m ²
Building Height	10m

Extras

Sprinkler System Warehouse Office Secure Parking



<https://www.newpointproperty.co.za>