



Brandon Whitehead

Candidate Property Practitioner
Registered with PPRA
(FFC 121 151 9)

0817743977

brandon@newpointproperty.co.za

Contact Head Office

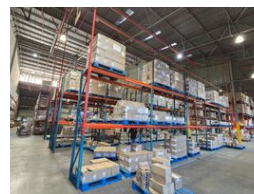
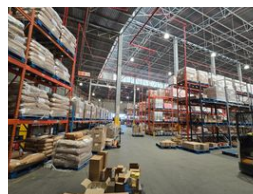
010 0354431

Office 40A
Eden Meadows Complex
1 Van Riebeeck Avenue
Greenstone
1609

5,994m² Warehouse To Let in Isando



Web Ref BW5994302CL



R359,640 pm

Gross Monthly Rental R359,640 Excl. VAT
Monthly Rates R1 Excl. VAT

Monthly Levy R1 Excl. VAT

3 20

5,994m² High-Spec Warehouse with Cold Storage & Superlink Access – Turnkey Logistics Solution

This 5,994m² warehouse offers a fully secure, ASIB-compliant facility ideal for logistics, cold chain, or high-volume storage operations. It features two cold rooms—including a freezer reaching -18°C—comprehensive sprinkler protection (including in-rack), and a powerful 300-amp three-phase power supply. The open-plan layout, excellent height, and multiple roller shutter doors ensure operational efficiency.

The property provides seamless superlink truck access with dual entry points, while the double-volume offices include reception, boardrooms, and a mix of executive and open-plan spaces. Staff amenities include a canteen, kitchen, and ablutions. Contact us

Features

Zoning Industrial

Interior

| | |
|--------------------|---------------------|
| Floor Loading Cap. | 5 Tn/m ² |
| Air Conditioning | Yes |
| Power 3 Phase | Yes |
| Power Amps | 300 |

Exterior

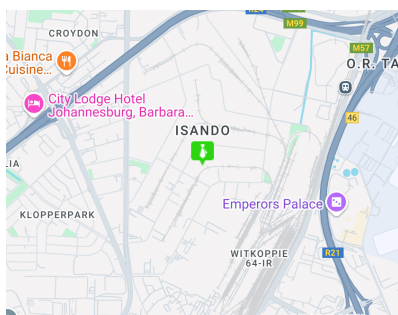
| | |
|----------------------|-----|
| Security | Yes |
| Covered Parking Bays | 3 |
| Open Parking Bays | 20 |

Sizes

| | |
|-----------------|---------------------|
| Floor Size | 5,994m ² |
| Land Size | 8,000m ² |
| Building Height | 10m |

Extras

Sprinkler System Warehouse Office Secure Parking



<https://www.newpointproperty.co.za>