



Brandon Whitehead

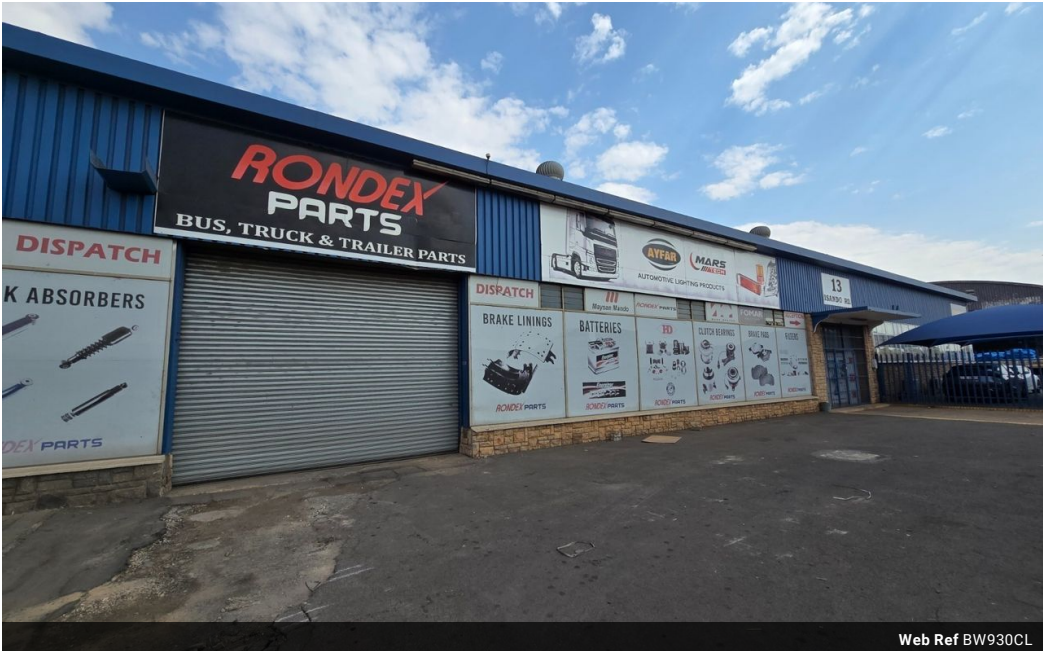
Candidate Property Practitioner
Registered with PPRA
(FFC 121 151 9)
0817743977
brandon@newpointproperty.co.za

Contact Head Office

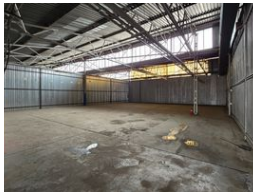
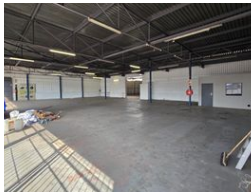
010 0354431

Office 40A
Eden Meadows Complex
1 Van Riebeeck Avenue
Greenstone
1609

930m² Warehouse To Let in Isando





Web Ref BW930CL



R55,800 pm

Gross Monthly Rental R55,800 Excl. VAT

 0  10

High-Visibility Industrial Space with Power & Prime Access – Just Minutes from OR Tambo

Positioned just off Isando Road with seamless access to the R24 and N12 highways, this 930m² multi-tenanted warehouse offers excellent exposure and operational convenience. Ideal for logistics, distribution, or trade businesses, the property boasts a powerful 630-amp three-phase supply, secure parking, and multiple entry points. Its proximity to OR Tambo International Airport and nearby retail hubs makes it a strategic choice for businesses looking for both visibility and efficiency.

The warehouse features an on-grade roller door, impressive height to the eaves, and ample space for maneuverability and storage. Whether you're expanding or relocating, this versatile property in a high-traffic industrial zone delivers on functionality and location.

Features

Zoning Industrial

Interior

Air Conditioning	Yes
Power 3 Phase	Yes
Power Amps	630

Exterior

Open Parking Bays 10

Sizes

Floor Size	930m²
Land Size	1,000m²
Building Height	7m

