



Brandon Whitehead

Candidate Property Practitioner
Registered with PPRA
(FFC 121 151 9)

0817743977

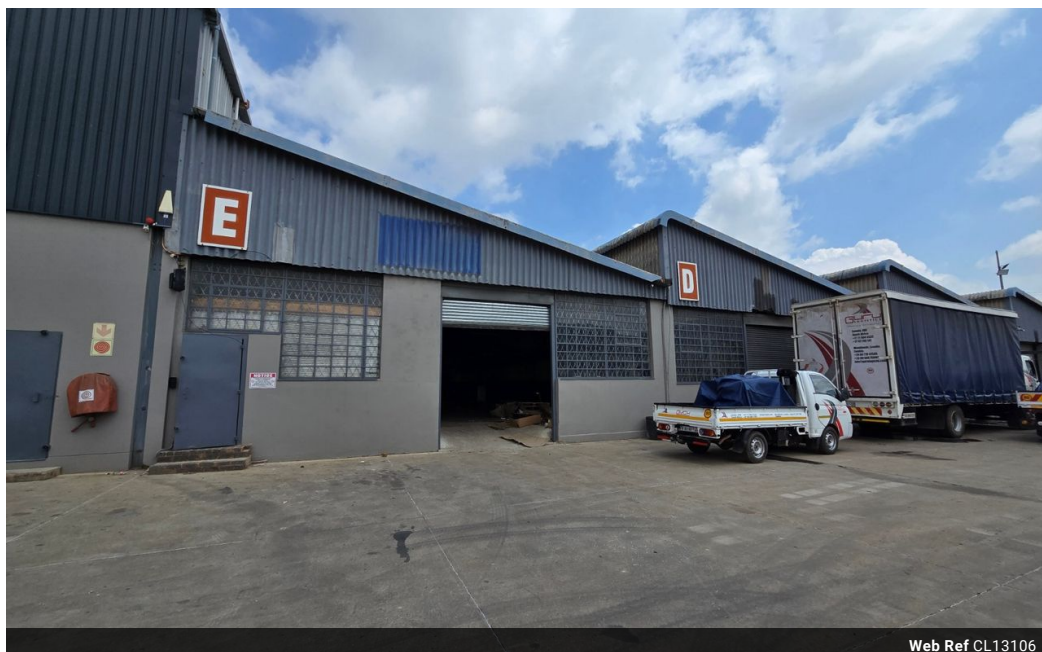
brandon@newpointproperty.co.za

Contact Head Office

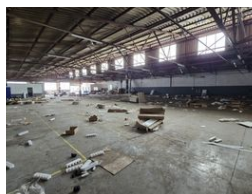
010 0354431

Office 40A
Eden Meadows Complex
1 Van Riebeeck Avenue
Greenstone
1609

1,200m² Warehouse To Let in Isando



Web Ref CL13106



R60,000 pm

Gross Monthly Rental R60,000 Excl. VAT
Monthly Rates R1 Excl. VAT

Monthly Levy R1 Excl. VAT



0



5

1,200m² Warehouse To Let in Secure Isando Park – Ideal for Logistics & Light Manufacturing

Positioned in a secure, multi-tenanted industrial park in Isando, this 1,200m² warehouse offers the perfect space for light manufacturing, final assembly, or cross-border logistics. The facility features large sliding doors for easy loading, excellent truck access, and an integrated office component—ready for immediate occupation.

With 24/7 security and superb truck reticulation, the park ensures smooth, secure operations. Its prime location near major highways and OR Tambo International Airport guarantees exceptional connectivity for your business. Don't miss out—contact us

Features

Zoning Industrial

Interior

Floor Loading Cap.	1 Tn/m ²
Power 3 Phase	Yes
Power Amps	100

Exterior

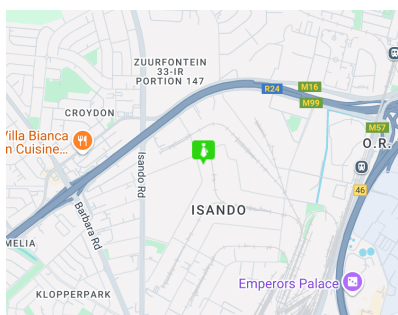
Security	Yes
Open Parking Bays	5

Sizes

Floor Size	1,200m ²
Land Size	1,200m ²
Building Height	6m

Extras

Warehouse Security Gate Security Complex 24 Hour Access



<https://www.newpointproperty.co.za>