



Brandon Whitehead

Candidate Property Practitioner
Registered with PPRA
(FFC 121 151 9)

0817743977

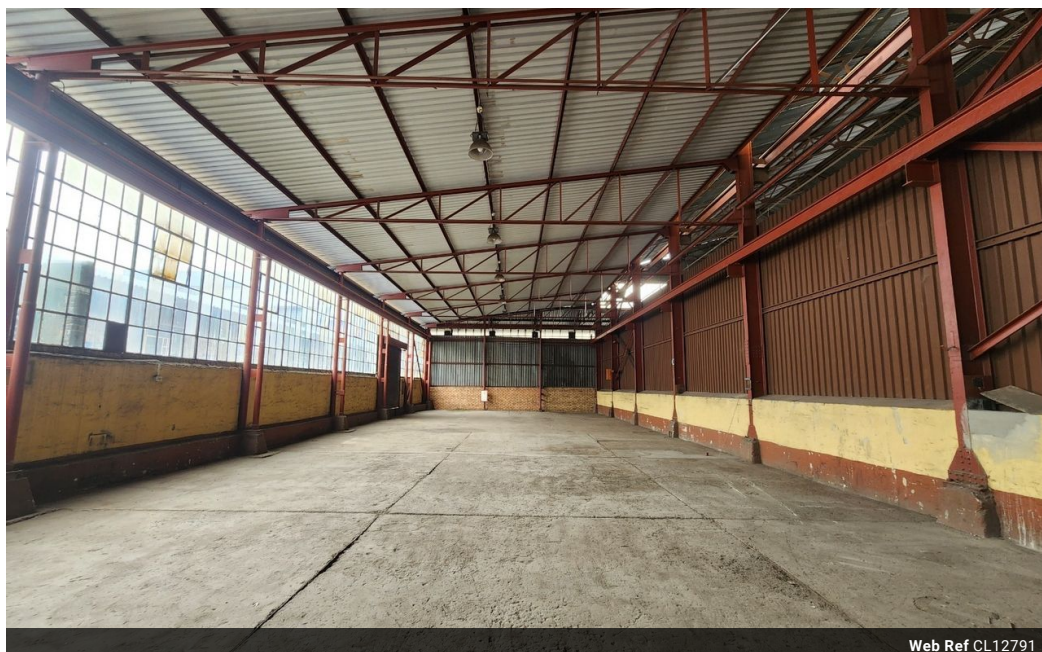
brandon@newpointproperty.co.za

Contact Head Office

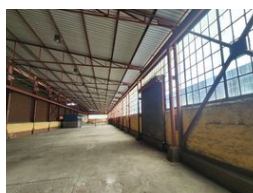
010 0354431

Office 40A
Eden Meadows Complex
1 Van Riebeeck Avenue
Greenstone
1609

1,080m² Warehouse To Let in Isando



Web Ref CL12791



R54,000 pm

Gross Monthly Rental R54,000 Excl. VAT



0



4

Prime 1,080m² Warehouse with 5-Ton Crane in Isando

Position your business for success with this ideally located 1,080m² warehouse in the heart of Isando's industrial zone. This high-performance facility features a 5-ton overhead crane, 100-amp three-phase power supply, 6-meter eave height, and an on-grade roller shutter door with super link access—perfect for seamless operations and efficient logistics.

Abundant natural light, minimal load-shedding disruptions, and 24/7 security create a reliable and productive working environment. Located near O.R. Tambo International Airport and major highways, this warehouse offers unbeatable accessibility for

Features

Zoning Industrial

Interior

Power 3 Phase	Yes
Power Amps	100

Exterior

Security	Yes
Open Parking Bays	4

Sizes

Floor Size	1,080m ²
Land Size	1,100m ²
Building Height	7m

