



**Brandon Whitehead**

Candidate Property Practitioner  
Registered with PPRA  
(FFC 121 151 9)

0817743977

[brandon@newpointproperty.co.za](mailto:brandon@newpointproperty.co.za)

Contact Head Office

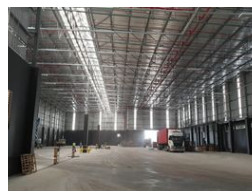
010 0354431

Office 40A  
Eden Meadows Complex  
1 Van Riebeeck Avenue  
Greenstone  
1609

4,300m<sup>2</sup> Warehouse To Let in Isando



Web Ref CL10930



R301,000 pm

Gross Monthly Rental R301,000 Excl. VAT



0



10

## 4 300sqm A-grade industrial warehouse in Isando, Kempton Park

A highly secure, A-grade warehousing facility spanning 4,300 square meters is currently available for lease in Isando. This well-designed warehouse boasts an impressive 10-meter height to the eaves and offers super link access, ensuring optimal functionality. The property features a spacious communal yard capable of accommodating multiple super link trucks when required. Equipped with a substantial three-phase power supply, the warehouse meets diverse industrial needs and is safeguarded by a comprehensive sprinkler system, enhancing safety and operational efficiency.

Complementing the warehousing space is a small office, making it an ideal solution for overflow storage, logistics companies, and freight forwarding businesses. The facility is well-equipped with staff ablutions and a kitchen/canteen area, ensuring a

## Features

**Zoning** Industrial

### Interior

Air Conditioning	Yes
Power 3 Phase	Yes

### Exterior

Security	Yes
Open Parking Bays	10

### Sizes

Floor Size	4,300m <sup>2</sup>
Land Size	25,000m <sup>2</sup>
Building Height	10m



<https://www.newpointproperty.co.za>