



Marcel Carneiro
Candidate Property Practitioner
Registered with PPRA
(FFC 120 075 3)
0846932233

marcel@newpointproperty.co.za

Contact Head Office

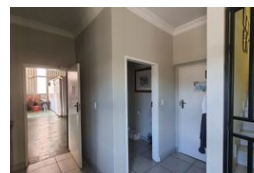
010 0354431

Office 40A
Eden Meadows Complex
1 Van Riebeeck Avenue
Greenstone
1609

513m² Warehouse To Let in Chloorkop



Web Ref MC513TLChloorkop



R46,683 pm

Gross Monthly Rental R46,683 Excl. VAT
Monthly Rates R1 Excl. VAT

Monthly Levy R1 Excl. VAT



A-Grade 513m² Industrial Warehouse to let in Chloorkop

Situated in the sought-after Chloorkop industrial node, this A-grade 513m² warehouse is now available To Let. The facility features excellent height to eaves, ample natural lighting, and a large roller shutter door for seamless access. Equipped with a reliable 125-amp, three-phase power supply, this space is ideal for businesses requiring efficient energy use and optimal storage capacity.

The modern office component includes a welcoming reception area, open-plan workspaces, private offices, a boardroom, kitchen facilities, and male and female restrooms. Secure on-site parking is available for staff and visitors. Conveniently located near O.R. Tambo International Airport with easy access to the N3, R21, and R24 highways, this property offers unbeatable connectivity for

Features

Zoning Industrial

Interior

Floor Loading Cap.	1 Tn/m ²
Power 3 Phase	Yes
Power Amps	125

Exterior

Security	Yes
Covered Parking Bays	4
Open Parking Bays	4

Sizes

Floor Size	513m ²
Land Size	513m ²
Building Height	8m

