



**Mitchell Pereira**  
Candidate Property  
Practitioner  
Registered with PPRA  
(FFC 118 481 0)  
**0812348999**

[mitchell@newpointproperty.co.za](mailto:mitchell@newpointproperty.co.za)

Contact Head Office

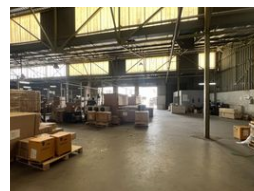
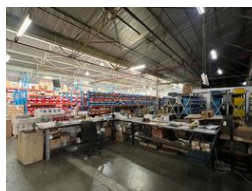
**010 0354431**

Office 40A  
Eden Meadows Complex  
1 Van Riebeeck Avenue  
Greenstone  
1609

6,061m<sup>2</sup> Warehouse To Let in Steeledale



Web Ref CL13682



**R375,782 pm**

**Gross Monthly Rental** R375,782 Excl. VAT  
**Monthly Rates** R1 Excl. VAT

**Monthly Levy** R1 Excl. VAT

20 15

## 6,061m<sup>2</sup> Industrial Warehouse with Yard & Showroom Potential in Steeledale

Elevate your business with this 6,061m<sup>2</sup> industrial facility in Steeledale, positioned on a high-visibility corner stand. The property offers multiple roller shutter doors, a full sprinkler system, and internal firewalls for safety, with a spacious yard for smooth truck access. The warehouse features 4–5m eave height and ample natural lighting—ideal for warehousing, wholesale, or light manufacturing.

The office component includes a large cash sales counter, private offices, and secure covered parking for staff and customers. Located in a busy industrial hub with excellent transport links, this is a rare leasing opportunity for businesses looking for both

## Features

**Zoning** Industrial

### Interior

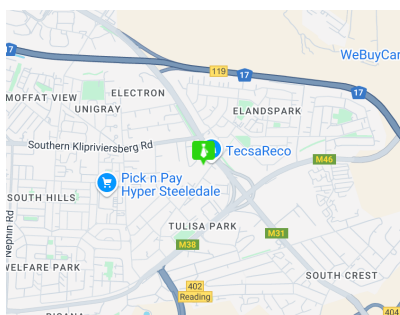
Power 3 Phase Yes  
Power Amps 1000

### Exterior

Security Yes  
Covered Parking Bays 20  
Open Parking Bays 15

### Sizes

Floor Size 6,061m<sup>2</sup>  
Land Size 9,300m<sup>2</sup>



<https://www.newpointproperty.co.za>