



**Mitchell Pereira**  
Candidate Property  
Practitioner  
Registered with PPRA  
(FFC 118 481 0)  
0812348999

[mitchell@newpointproperty.co.za](mailto:mitchell@newpointproperty.co.za)

Contact Head Office

010 0354431

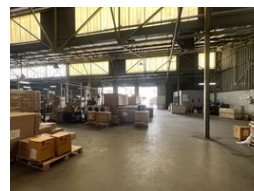
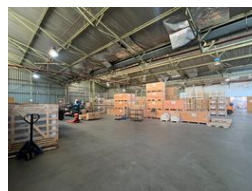
Office 40A  
Eden Meadows Complex  
1 Van Riebeeck Avenue  
Greenstone  
1609

6,061m<sup>2</sup> Warehouse To Let in Steeledale

NEW



Web Ref CL13025



R375,782 pm

**Gross Monthly Rental** R375,782 Excl. VAT  
**Monthly Rates** R1 Excl. VAT

**Monthly Levy** R1 Excl. VAT

20 15

## Prime 6,061m<sup>2</sup> Industrial Facility To Let in Steeledale – Ideal for Wholesale, Warehousing or Manufac

This landmark industrial property in Steeledale offers 6,061m<sup>2</sup> under roof and is now available to rent. Perfectly suited for wholesale, warehousing, or manufacturing operations, the facility features a spacious warehouse with internal firewalls, a sprinkler system, multiple roller shutter doors, and a large yard for smooth truck access. With 4–5 meters to the eaves and abundant natural light, the warehouse ensures both safety and efficiency. Situated on a prominent corner, the site benefits from high visibility and strong foot traffic.

The office component includes a generous cash sales counter area and several private offices, providing a practical setup for both admin and customer-facing operations. Ample parking is available, with numerous covered bays for staff and clients. Located in a

## Features

**Zoning** Industrial

### Interior

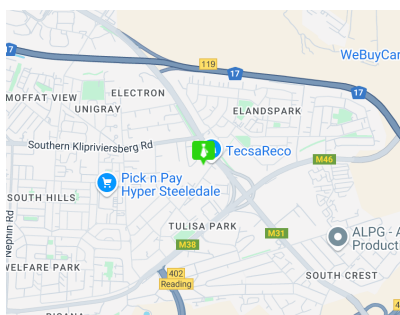
Power 3 Phase Yes  
Power Amps 1000

### Exterior

Security Yes  
Covered Parking Bays 20  
Open Parking Bays 15

### Sizes

Floor Size 6,061m<sup>2</sup>  
Land Size 9,300m<sup>2</sup>



<https://www.newpointproperty.co.za>