



**Mitchell Pereira**  
Candidate Property  
Practitioner  
Registered with PPRA  
(FFC 118 481 0)  
**0812348999**

[mitchell@newpointproperty.co.za](mailto:mitchell@newpointproperty.co.za)

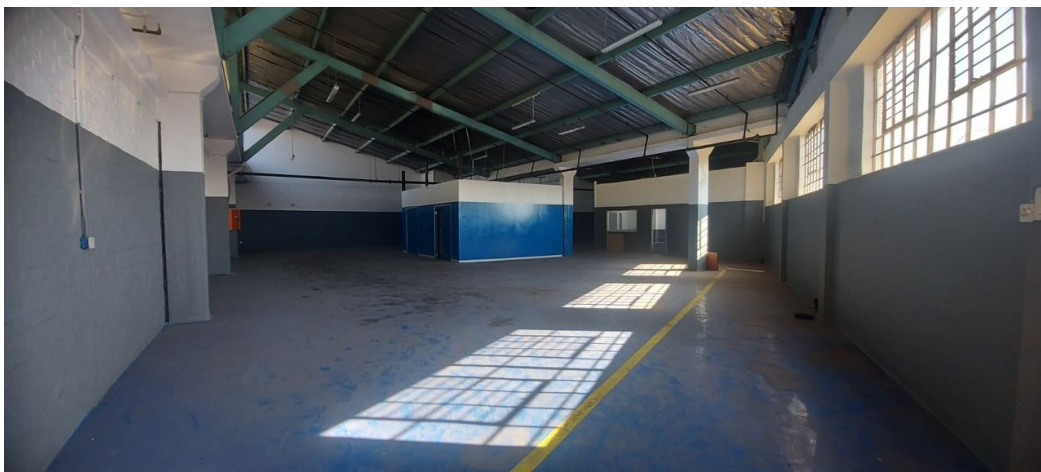
Contact Head Office

**010 0354431**

Office 40A  
Eden Meadows Complex  
1 Van Riebeeck Avenue  
Greenstone  
1609

## 778m² Mini Factory To Let in Steeledale

NEW



Web Ref CL14046



**R45,124 pm**

**Gross Monthly Rental** R45,124 Excl. VAT  
**Monthly Rates** R1 Excl. VAT

**Monthly Levy** R1 Excl. VAT



## 778m² Industrial Unit with Prime Road Exposure in Steeledale

Position your business in this secure 778m² industrial unit within a 24-hour access-controlled park in Steeledale. The property offers a large on-grade roller shutter door, spacious reception with partitioned offices, and a clean, well-kept factory floor featuring multiple production zones. A central office space can be adapted for boardrooms or specialised clean rooms, making it ideal for manufacturing or assembly operations.

Located in Johannesburg South's established industrial hub, the unit enjoys direct access to the N17, M2, N12, N3, and R59 highways, ensuring smooth logistics throughout the city. With a strong power supply and a proven industrial reputation, Steeledale

## Features

**Zoning** Industrial

### Interior

Power 3 Phase Yes  
Power Amps 60

### Exterior

Security Yes

### Sizes

Floor Size 778m²  
Land Size 778m²

