



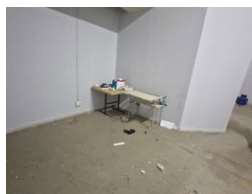
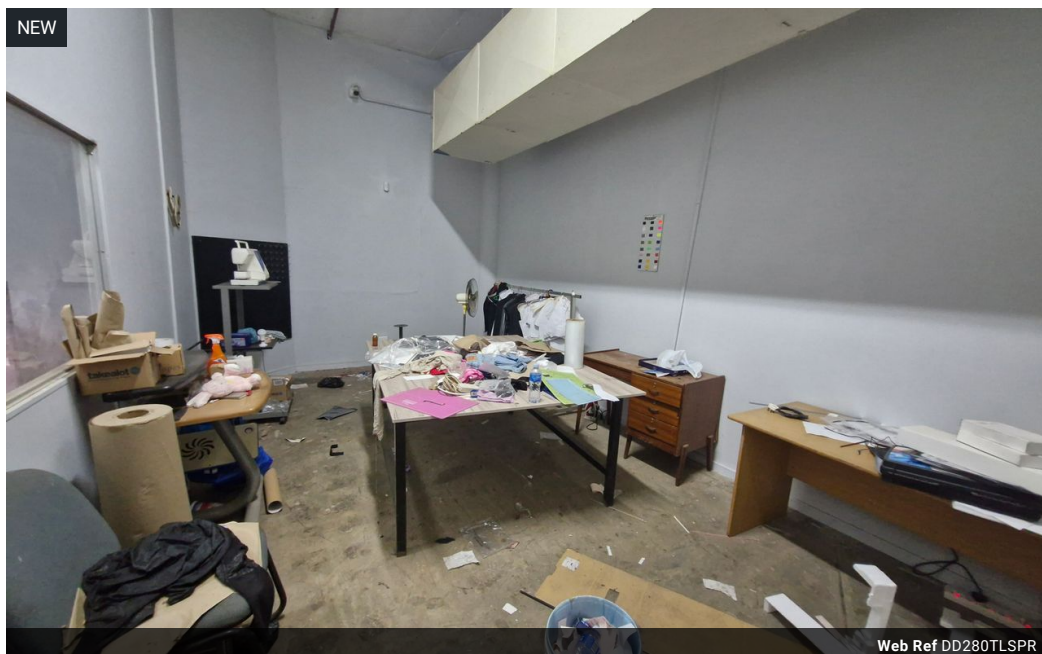
Dane Davids
0844782022
dane@newpointproperty.co.za

Contact Head Office

010 0354431

Office 40A
Eden Meadows Complex
1 Van Riebeeck Avenue
Greenstone
1609

280m² Warehouse To Let in Springfield



R9,800 pm

Gross Monthly Rental R9,800 Excl. VAT
Monthly Rates R1 Excl. VAT

Monthly Levy R1 Excl. VAT

5 0

Versatile industrial warehouse and office space , with security in Springfield Johannesburg South

This 280m² industrial warehouse is situated in the secure, well-established industrial hub of Springfield, Johannesburg South. The unit is clean, versatile, and well-kept, making it suitable for light manufacturing, storage, or distribution. It comes equipped with a sprinkler system for enhanced safety and compliance. Its layout also makes it an excellent fit for a security company's call centre or headquarters.

Located in a neat, access-controlled complex, the property offers a safe and professional environment for your operations. Its strategic position provides easy access to major transport routes, ensuring seamless connectivity throughout Johannesburg. An

Features

Zoning Industrial

Interior

Floor Loading Cap. 10 Tn/m²
Power 3 Phase Yes
Power Amps 100

Exterior

Security Yes
Covered Parking Bays 5

Sizes

Floor Size 280m²
Land Size 4,000m²
Building Height 10m

