



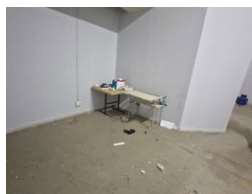
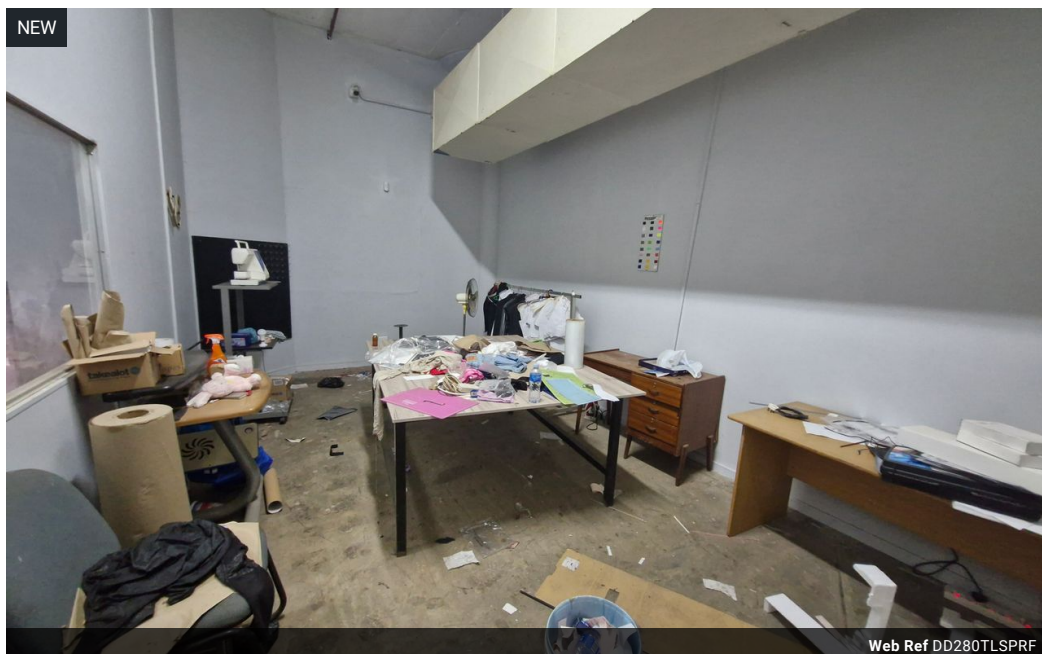
**Dane Davids**  
0844782022  
dane@newpointproperty.co.za

Contact Head Office

010 0354431

Office 40A  
Eden Meadows Complex  
1 Van Riebeeck Avenue  
Greenstone  
1609

280m<sup>2</sup> Warehouse To Let in Springfield



R9,800 pm

**Gross Monthly Rental** R9,800 Excl. VAT  
**Monthly Rates** R1 Excl. VAT

**Monthly Levy** R1 Excl. VAT

0 0

## Versatile industrial warehouse and office space in Springfield Johannesburg South

This 280m<sup>2</sup> industrial warehouse unit is located in the secure and well-established industrial hub of Springfield, Johannesburg South. The space is versatile and well-maintained, making it ideal for light manufacturing, storage, or distribution. The unit is fitted with a sprinkler system, offering added safety and compliance. This unit is perfect for a security company call centre or headquarters.

The property is set within a neat and secure complex, providing peace of mind for your operations. With easy access to key transport routes, this location ensures efficient connectivity to the greater Johannesburg area. A practical solution for businesses.

## Features

**Zoning** Industrial

### Interior

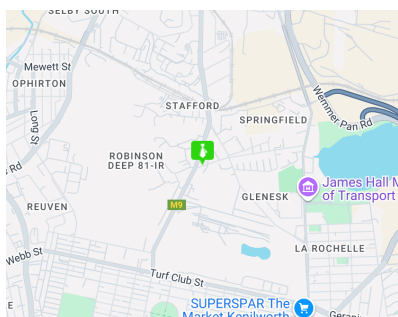
Floor Loading Cap. 10 Tn/m<sup>2</sup>  
Power 3 Phase Yes  
Power Amps 100

### Exterior

Security Yes

### Sizes

Floor Size 280m<sup>2</sup>  
Land Size 4,000m<sup>2</sup>



<https://www.newpointproperty.co.za>