



Jarred Purchase
Candidate Property Practitioner
Registered with PPRA
(FFC 118 480 9)
0763465458

jarred@newpointproperty.co.za

Contact Head Office

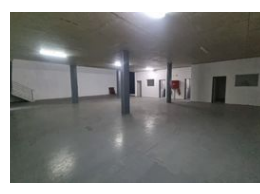
010 0354431

Office 40A
Eden Meadows Complex
1 Van Riebeeck Avenue
Greenstone
1609

650m² Warehouse To Let in Ormonde



Web Ref CL13832



R39,000 pm

Gross Monthly Rental R39,000 Excl. VAT

0 5

Immaculate 650m² Warehouse with Offices & Truck Access in Secure Ormonde Park

Now available for rent, this well-maintained 650m² warehouse is situated in a secure business park in the heart of Ormonde. The unit offers excellent height of approximately 8 meters, an on-grade roller shutter door, a spacious mezzanine for additional storage, and 100 amps of power via a pre-paid meter. It includes a kitchen, male and female ablutions, and is ideal for businesses needing efficient space in a strategic location.

The office component features a large reception, boardroom, open-plan office, and private executive offices—all serviced with modern restrooms and a kitchen. The park provides 24-hour security, ample parking, and a dedicated truck yard with dual access

Features

Zoning Industrial

Interior

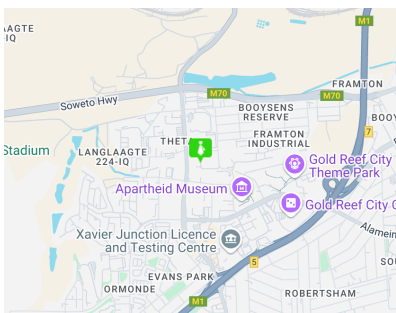
Power 3 Phase	Yes
Power Amps	80

Exterior

Security	Yes
Open Parking Bays	5

Sizes

Floor Size	650m ²
Land Size	10,000m ²
Building Height	7m



<https://www.newpointproperty.co.za>