



Jarred Purchase
 Candidate Property
 Practitioner
 Registered with PPRA
 (FFC 118 480 9)
 0763465458

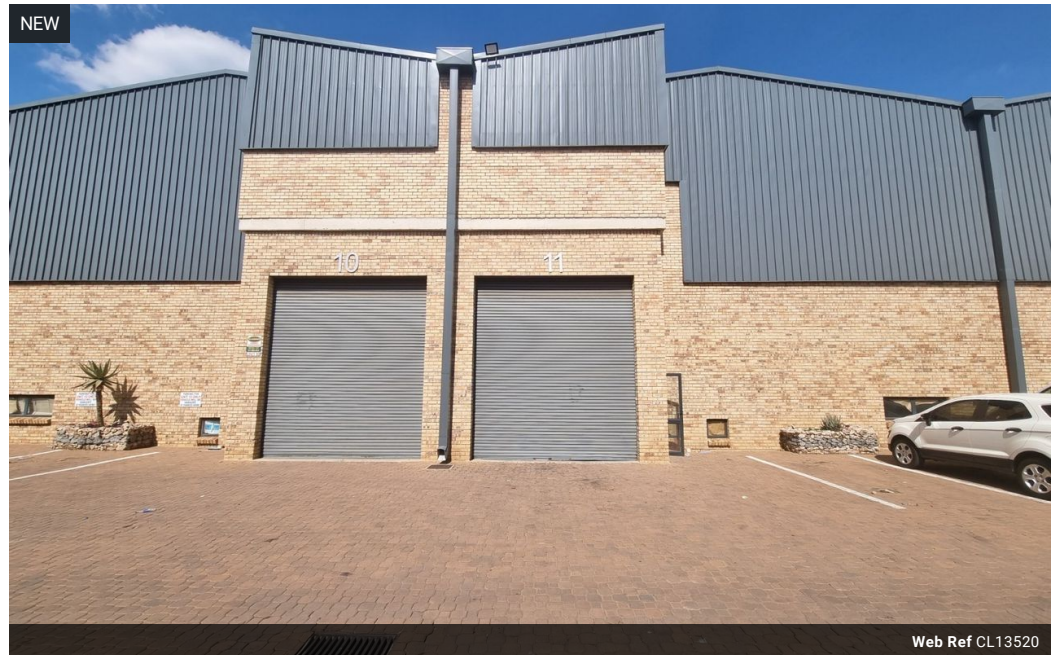
jarred@newpointproperty.co.za

Contact Head Office

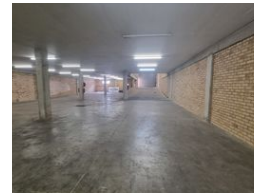
010 0354431

Office 40A
 Eden Meadows Complex
 1 Van Riebeeck Avenue
 Greenstone
 1609

512m² Warehouse To Let in Ormonde



Web Ref CL13520



R34,304 pm

Gross Monthly Rental R34,304 Excl. VAT

0 6

Efficient 512m² Warehouse To Let with Great Access and Secure Yard in Johannesburg

Unlock practical industrial space with this well-maintained 512m² warehouse, ideal for light manufacturing, storage, or logistics. The open-plan layout features great natural light, a large on-grade roller shutter door, and a reliable three-phase power supply—ensuring smooth, uninterrupted operations.

Additional features include tidy staff ablutions, a kitchen, and generous yard space for truck maneuvering and parking. Located in a secure industrial park with 24/7 security and excellent access to the M2 and N12 highways, this unit offers convenience, safety,

Features

Zoning Industrial

Interior

Power 3 Phase	Yes
Power Amps	160

Exterior

Security	Yes
Open Parking Bays	6

Sizes

Floor Size	512m ²
Land Size	15,000m ²
Building Height	5m

