



Jarred Purchase
Candidate Property
Practitioner
Registered with PPRA
(FFC 118 480 9)
0763465458

jarred@newpointproperty.co.za

Contact Head Office

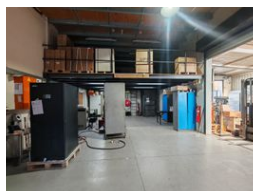
010 0354431

Office 40A
Eden Meadows Complex
1 Van Riebeeck Avenue
Greenstone
1609

1,047m² Warehouse To Let in Ormonde



Web Ref JP1047TLORM



R73,920 pm

Gross Monthly Rental R73,920 Excl. VAT

10 30

Immaculate 1047m² property in Ormonde To Let.

Immaculate freestanding property located in the heart of the highly sought after Ormonde area has come available for rental. This extremely neat and well maintained facility consists of an A-Grade office component with a small warehouse area. The warehouse has an on grade roller shutter door that is accessible via the large paved yard area, the warehouse has good height, excellent natural lighting and a mezzanine level with a 500 kg good lift and there is three phase power supply.

The immaculate office component spans over two floors, the ground floor consists of a reception area, with a guest waiting area, there are several well sized air-conditioned offices, a well sized open plan area, and a boardroom, neat Male and Female toilets as

Features

Zoning Industrial

Interior

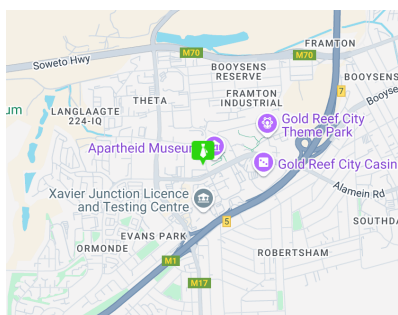
Air Conditioning	Yes
Power 3 Phase	Yes
Power Amps	100

Exterior

Security	Yes
Covered Parking Bays	10
Open Parking Bays	30

Sizes

Floor Size	1,047m ²
Land Size	1,500m ²
Building Height	6m



<https://www.newpointproperty.co.za>