



Jarred Purchase
Candidate Property
Practitioner
Registered with PPRA
(FFC 118 480 9)
0763465458

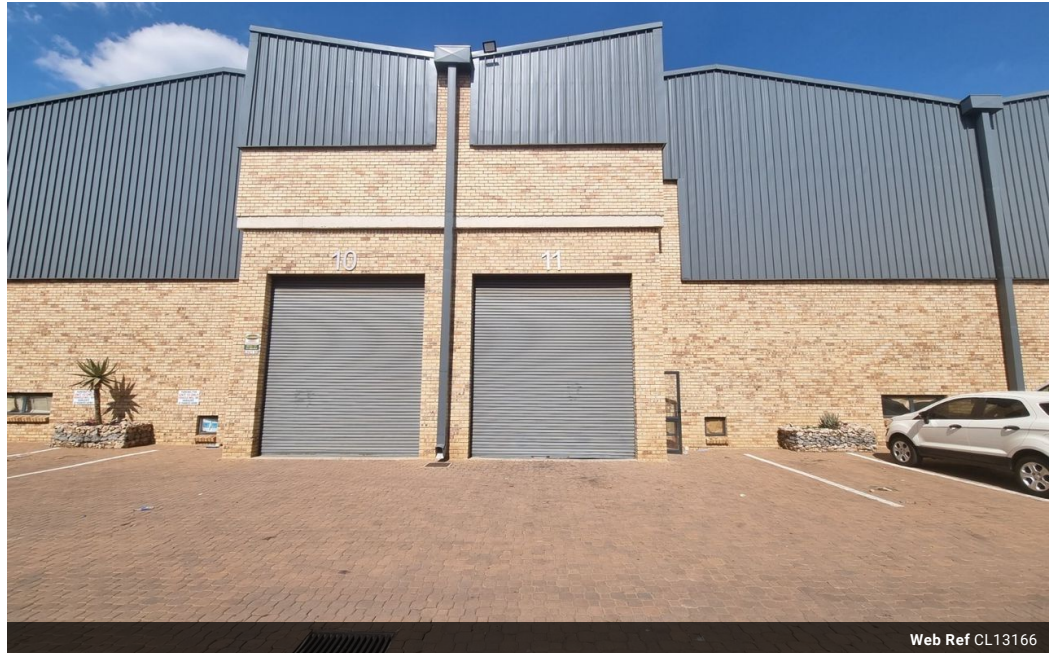
jarred@newpointproperty.co.za

Contact Head Office

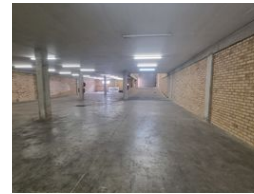
010 0354431

Office 40A
Eden Meadows Complex
1 Van Riebeeck Avenue
Greenstone
1609

512m² Warehouse To Let in Ormonde



Web Ref CL13166



R34,304 pm

Gross Monthly Rental R34,304 Excl. VAT



0



6

Versatile 512m² Warehouse with Excellent Access in Secure Business Park

This well-kept 512m² warehouse is perfect for storage, light manufacturing, or logistics operations. The open-plan design is enhanced by ample natural light, an on-grade roller shutter door for smooth access, and a dependable three-phase power supply to support your operational needs.

The unit features neat staff ablutions, a kitchen, and generous yard space for truck movement and parking. Situated in a secure park with 24/7 on-site security, it offers quick access to the M2 and N12 highways, making distribution and commuting effortless.

Features

Zoning Industrial

Interior

Power 3 Phase	Yes
Power Amps	160

Exterior

Security	Yes
Open Parking Bays	6

Sizes

Floor Size	512m ²
Land Size	15,000m ²
Building Height	5m

