



Tyrone Varga
Principal Property
Practitioner
Registered with PPRA
(FFC 114 321 7)
072 869 3246

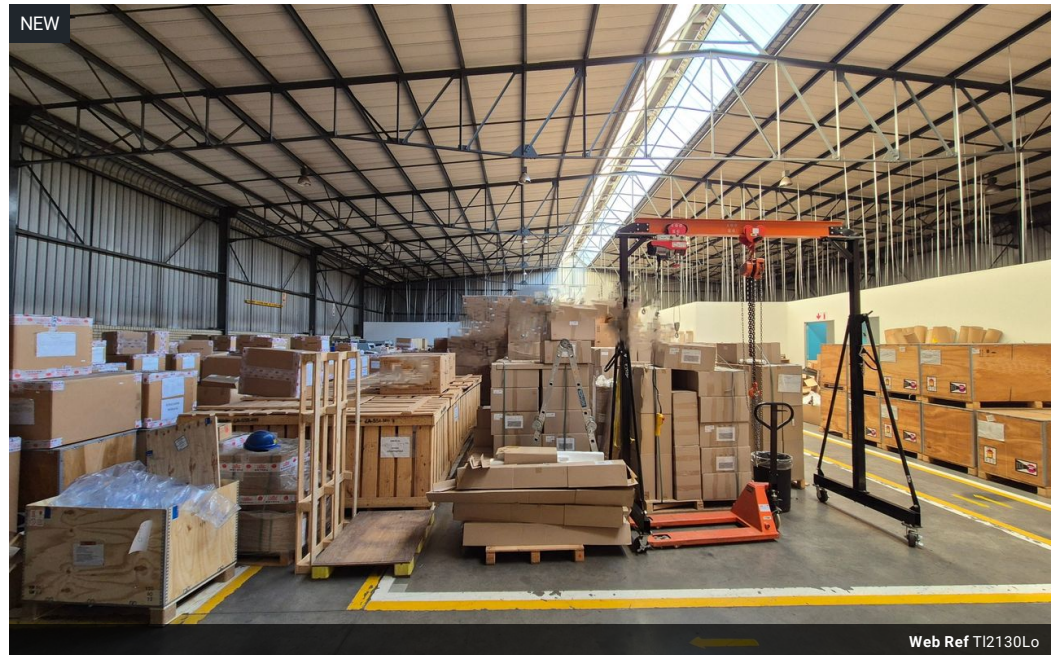
tyrone@newpointproperty.co.za

Contact Head Office

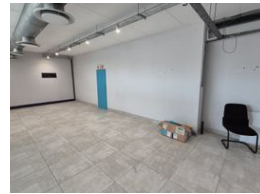
010 0354431

Office 40A
Eden Meadows Complex
1 Van Riebeeck Avenue
Greenstone
1609

2,130m² Warehouse To Let in Longmeadow



Web Ref TI2130Lo



R181,050 pm

Gross Monthly Rental R181,050 Excl. VAT

Monthly Levy R29,415 Excl. VAT

38 0

Neat Warehouse on a large stand in Longmeadow business estate

A-grade free-standing industrial property to let, situated on a 4,200m² fully paved stand in the sought-after Longmeadow Business Estate with 24-hour security. The property offers excellent yard space with two separate entrances, allowing trucks to move in and out with ease. The warehouse measures 1,503m² and features good height, ample natural lighting, and 320 amps of 3-phase power. It is fitted with two large roller shutter doors—one with a dock leveller and one drive-in—for flexible loading and offloading options.

The office component measures 627m² and is exceptionally neat, providing a professional working environment. There are ample ablution facilities for both warehouse and office staff. This property offers superb accessibility, located just a stone's throw from

Features

Zoning Industrial

Interior

Power 3 Phase	Yes
Power Amps	320

Exterior

Security	Yes
Covered Parking Bays	38

Sizes

Floor Size	2,130m ²
Land Size	4,200m ²