



Tyrone Varga

Principal Property Practitioner
Registered with PPRA
(FFC 114 321 7)

072 869 3246

tyrone@newpointproperty.co.za

Contact Head Office

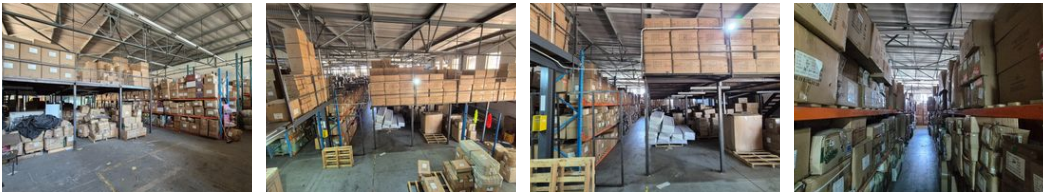
010 0354431

Office 40A
Eden Meadows Complex
1 Van Riebeeck Avenue
Greenstone
1609

1,105m² Warehouse To Let in Longmeadow





Web Ref CL13224



R88,400 pm

Gross Monthly Rental R88,400 Excl. VAT

 0  20

Versatile Showroom & Warehouse Space with Prime Road Exposure in Longmeadow

Position your business for success with this 1,105m² dual-purpose property in Longmeadow, featuring a 437m² open-plan showroom or office area paired with a 668m² high-volume warehouse. Located on a busy main road, the property offers outstanding visibility, seamless access, and over 20 dedicated parking bays—making it ideal for customer-facing operations or logistics-heavy businesses.

The warehouse is designed for efficiency with great height, ample natural light, and a robust 3-phase power supply. Modern offices overlook both the showroom and warehouse, creating a connected and professional work environment. Just off the N3 and close to Greenstone Mall, this property is the perfect combination of exposure, accessibility, and functionality. Get in touch today to

Features

Zoning		Industrial			
Interior	Power 3 Phase	Yes	Exterior	Open Parking Bays	Sizes
	Power Amps	60			
					Floor Size
					Land Size
					1,105m²
					3,000m²

