



Tyrone Varga
Principal Property
Practitioner
Registered with PPRA
(FFC 114 321 7)
072 869 3246

tyrone@newpointproperty.co.za

Contact Head Office

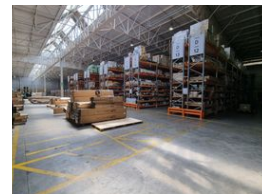
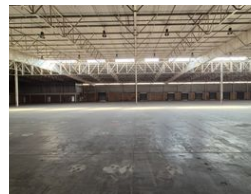
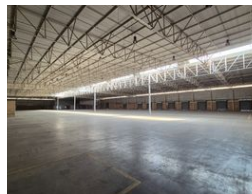
010 0354431

Office 40A
Eden Meadows Complex
1 Van Riebeeck Avenue
Greenstone
1609

7,263m² Warehouse To Let in Longmeadow



Web Ref CL11163



R544,725 pm

Gross Monthly Rental R544,725 Excl. VAT

15 50

7 263sqm Warehouse facility in the sought after area of Longmeadow,, Johannesburg

This strategically positioned property near the N3 highway offers excellent connectivity, making it a prime choice for businesses prioritizing efficient logistics. Spanning 6,603 square meters, the versatile warehouse features high ceilings for diverse storage needs and abundant natural light, promoting an energy-efficient workspace. Designed for secure industrial operations, the space is equipped with 3-phase power and strategically placed sprinklers. The 660-square-meter office area blends functionality with sophistication, offering a welcoming reception, a stylish boardroom, open-plan spaces, and private offices that encourage a collaborative and productive work environment.

The property's expansive paved yard is optimized for logistics, facilitating smooth loading and unloading of large vehicles. The

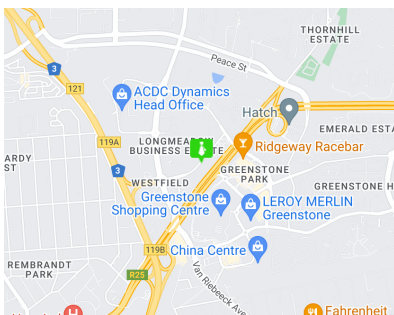
Features

Zoning Industrial

Interior
Power 3 Phase Yes

Exterior
Covered Parking Bays 15
Open Parking Bays 50

Sizes
Floor Size 7,263m²
Land Size 15,000m²



<https://www.newpointproperty.co.za>