



Ryan Van Rensburg
0846482022
ryan@newpointproperty.co.za

Contact Head Office

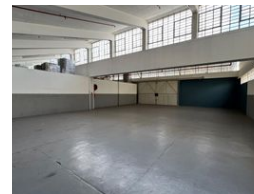
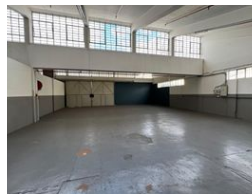
010 0354431

Office 40A
Eden Meadows Complex
1 Van Riebeeck Avenue
Greenstone
1609

325m² Warehouse To Let in Longdale



Web Ref RVR325LDTL



R13,500 pm

Gross Monthly Rental R13,500 Excl. VAT



325sqm Warehouse TO LET in Longdale

This neat and versatile 325sqm warehouse is located within a secure, multi-tenanted complex, ideal for a range of industrial or storage needs. The open-plan layout provides clear, unobstructed space, making it highly adaptable for various business operations. With convenient roller shutter door access, the warehouse allows for efficient loading and unloading of goods.

Equipped with three phase power, the property is well-suited for businesses requiring high-capacity electrical supply. The secure complex offers a safe working environment, with controlled access ensuring peace of mind for tenants. This functional and well-

Features

Zoning Industrial

Interior
Floor Loading Cap. 1 Tn/m²
Power 3 Phase Yes

Exterior
Security Yes

Sizes
Floor Size 325m²
Land Size 325m²
Building Height 5m

