



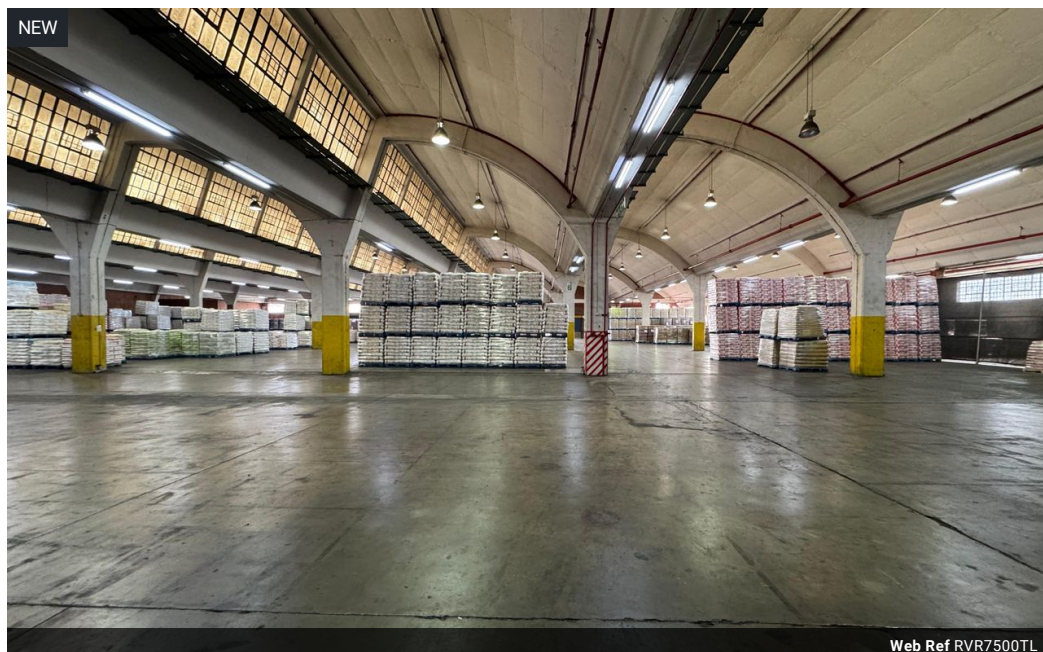
Ryan Van Rensburg
0846482022
ryan@newpointproperty.co.za

Contact Head Office

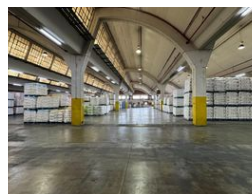
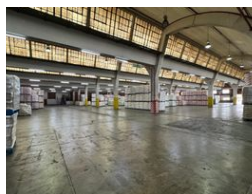
010 0354431

Office 40A
Eden Meadows Complex
1 Van Riebeeck Avenue
Greenstone
1609

7,500m² Warehouse To Let in Longdale



Web Ref RVR7500TL



R300,000 pm

Gross Monthly Rental R300,000 Excl. VAT



0



0

7500sqm Warehouse TO LET in Longdale

This immaculate 7,500sqm warehouse offers exceptional functionality and cleanliness, ideal for a wide range of industrial or logistics operations. The property features good internal height and roller shutter door access, allowing for smooth movement of goods and equipment.

A spacious open yard area at the front provides easy truck access and maneuverability, making it perfect for large vehicle operations. The facility also boasts food-grade capabilities, making it suitable for food processing, storage, or distribution

Features

Zoning Industrial

Interior

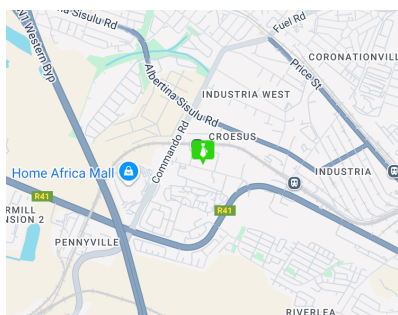
Floor Loading Cap. 1 Tn/m²
Power 3 Phase Yes

Exterior

Security Yes

Sizes

Floor Size 7,500m²
Land Size 7,500m²
Building Height 6m



<https://www.newpointproperty.co.za>