

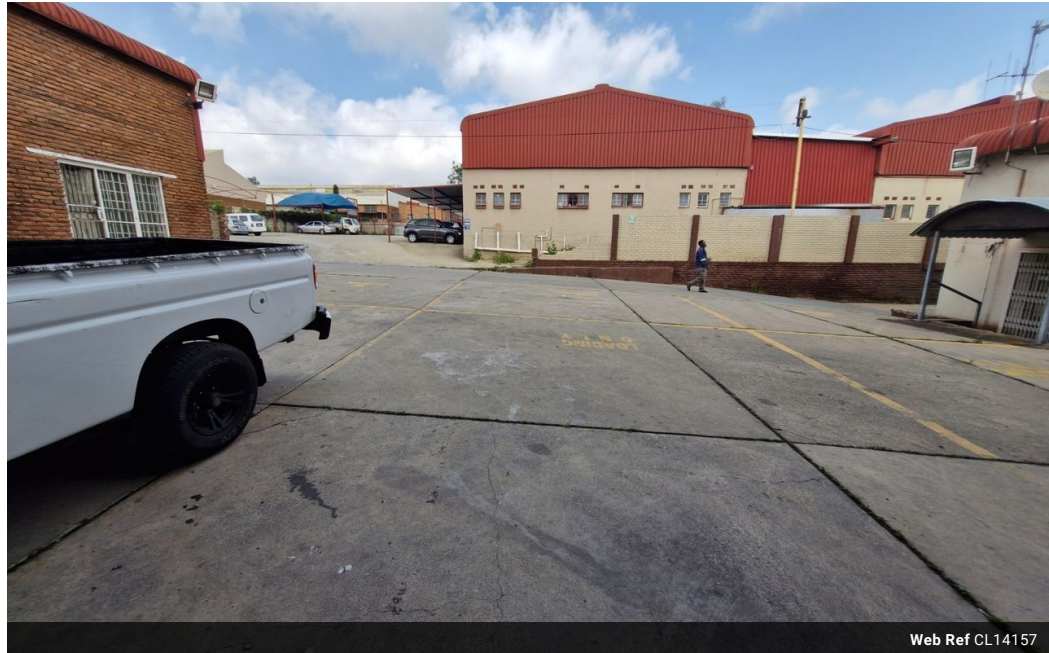


Miguel Naidoo  
0745822026  
miguel@newpointproperty.co.za

Contact Head Office  
010 0354431

Office 40A  
Eden Meadows Complex  
1 Van Riebeeck Avenue  
Greenstone  
1609

450m<sup>2</sup> Warehouse To Let in Kew



Web Ref CL14157



R19,250 pm

Gross Monthly Rental R19,250 Excl. VAT

0 10

## Well-Positioned Warehouse to Let in Kew

Unlock the potential of this versatile industrial warehouse in Kew, ideal for storage, light manufacturing, or logistics. Featuring excellent internal height for racking, plenty of natural light, and a large on-grade roller shutter door, the space is designed to support smooth and efficient operations.

Situated in a secure industrial precinct, the property offers a paved common yard with convenient truck access. Its prime location near the M1 and N3 highways provides seamless connectivity across Johannesburg, making it a practical choice for growing

## Features

**Zoning** Industrial

### Interior

Floor Loading Cap.	10 Tn/m <sup>2</sup>
Power 3 Phase	Yes
Power Amps	200

### Exterior

Security	Yes
Open Parking Bays	10

### Sizes

Floor Size	450m <sup>2</sup>
Land Size	6,000m <sup>2</sup>
Building Height	8m

