



Miguel Naidoo  
0745822026  
miguel@newpointproperty.co.za

Contact Head Office

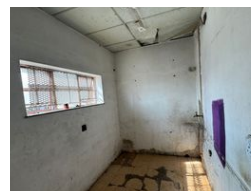
010 0354431

Office 40A  
Eden Meadows Complex  
1 Van Riebeeck Avenue  
Greenstone  
1609

500m<sup>2</sup> Warehouse To Let in Kew



Web Ref TL500KWMN



R14,000 pm

Gross Monthly Rental R14,000 Excl. VAT  
Monthly Rates R1 Excl. VAT

Monthly Levy R1 Excl. VAT

2 3

## 500m<sup>2</sup> industrial Warehouse Unit To Let in Kew

Located in the sought-after industrial zone of Kew, this well-maintained 500m<sup>2</sup> warehouse unit presents an excellent opportunity for businesses in need of a practical, secure, and accessible operational base. Perfectly suited to light manufacturing, warehousing, distribution, or service-based operations, the unit offers a functional layout that supports both productivity and flexibility. The warehouse is neat, clean, and ready for immediate occupancy, with a spacious open-plan floor that accommodates racking, machinery, or bulk storage with ease. A large roller shutter door provides seamless access for deliveries and dispatch, allowing easy movement for trucks, vans, and forklifts. The interior boasts generous ceiling height, durable flooring, and an

## Features

**Zoning** Industrial

### Interior

Floor Loading Cap. 1 Tn/m<sup>2</sup>  
Power 3 Phase Yes  
Power Amps 100

### Exterior

Security Yes  
Covered Parking Bays 2  
Open Parking Bays 3

### Sizes

Floor Size 500m<sup>2</sup>  
Land Size 10,000m<sup>2</sup>  
Building Height 10m

### Extras

24 Hour Access

