



Robin Mulligan
Candidate Property
Practitioner
Registered with PPRA
(FFC 121 152 0)
0713556301

robin@newpointproperty.co.za

Contact Head Office

010 0354431

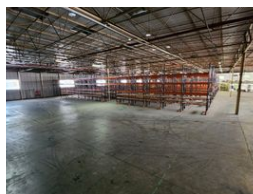
Office 40A
Eden Meadows Complex
1 Van Riebeeck Avenue
Greenstone
1609

12,732m² Warehouse To Let in Heriotdale

NEW



Web Ref RM12732M2TLHERI



R636,000 pm

Gross Monthly Rental R636,000 Excl. VAT

30 10

High-Power Freestanding Warehouse with Cold Storage & Highway Access in Heriotdale

Scale your operations with this impressive 12,732m² warehouse on a 15,885m² stand, strategically located in Heriotdale with direct access to the M2 highway. Designed for high-volume manufacturing, logistics, or cold storage, the facility features multiple large roller shutter doors (both on-grade and dock level), removable cold storage rooms, and a robust 1,250-amp three-phase power supply—supported by a backup generator. Exceptional height, a full sprinkler system, and smooth vehicle flow ensure efficiency at every level.

The modern double-storey office block includes a reception, private offices, boardrooms, and fully equipped kitchens and staff ablutions with showers. With secure covered parking and 24/7 access, this property offers a rare combination of performance,

Features

Zoning Industrial

Interior

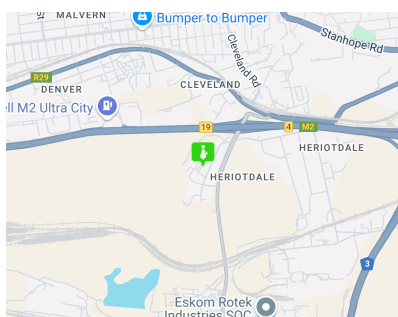
Air Conditioning	Yes
Power 3 Phase	Yes
Power Amps	1250

Exterior

Covered Parking Bays	30
Open Parking Bays	10

Sizes

Floor Size	12,732m ²
Land Size	15,885m ²
Building Height	15m



<https://www.newpointproperty.co.za>