



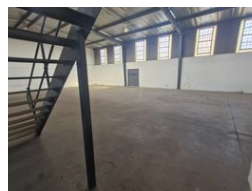
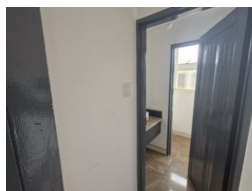
Dane Davids  
0844782022  
dane@newpointproperty.co.za

Contact Head Office

010 0354431

Office 40A  
Eden Meadows Complex  
1 Van Riebeeck Avenue  
Greenstone  
1609

356m<sup>2</sup> Warehouse To Let in Denver



R16,020 pm

**Gross Monthly Rental** R16,020 Excl. VAT  
**Monthly Rates** R1 Excl. VAT

**Monthly Levy** R1 Excl. VAT



## Industrial mini unit warehouse To Let in Denver Johannesburg

This 356m<sup>2</sup> industrial mini unit to let in Denver, Johannesburg, offers a functional and well-laid-out space within a secure, well-managed industrial park. It features a 4-meter on-grade roller door for easy vehicle access and efficient loading and offloading. The open-plan warehouse layout provides excellent operational flexibility, while the good height to the eaves allows for ample vertical storage and optimized workflow.

Located in a prime industrial area, the unit benefits from convenient access to major transport routes, ensuring smooth connectivity for distribution and logistics. The secure park offers controlled access and a safe working environment, making it ideal for light manufacturing, storage, or distribution. This unit combines practicality, accessibility, and security in one well-

## Features

**Zoning** Industrial

### Interior

Floor Loading Cap. 10 Tn/m<sup>2</sup>  
Power 3 Phase Yes  
Power Amps 63

### Exterior

Security Yes

### Sizes

Floor Size 356m<sup>2</sup>  
Land Size 5,000m<sup>2</sup>  
Building Height 7m

