



Jarred Purchase
Candidate Property
Practitioner
Registered with PPRA
(FFC 118 480 9)
0763465458

jarred@newpointproperty.co.za

Contact Head Office

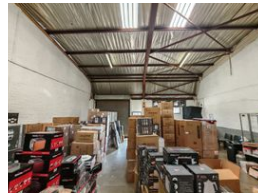
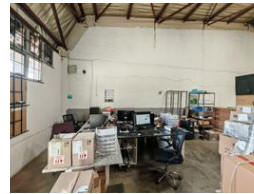
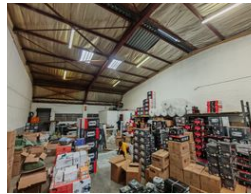
010 0354431

Office 40A
Eden Meadows Complex
1 Van Riebeeck Avenue
Greenstone
1609

193m² Warehouse To Let in Crown



Web Ref JP193TLCMX2



R9,650 pm

Gross Monthly Rental R9,650 Excl. VAT

0 5

Neat 193m² mini warehouse To Let in Crown Mines

Very neat and well maintained 193m² warehouse located in a secure park in Crown Mines available for rental. The unit has an on grade roller shutter door that leads into the open plan warehouse area, the unit has excellent height, and there is ample natural lighting through out the unit. The unit also has 80 amps three phase power supply.

The warehouse does not have a office are, however you are able to erect dry walled offices. There are two well kept toilets. The business park has a well sized yard area allowing for access with trucks and ample parking bays. The business park is secure with

Features

Zoning Industrial

Interior

Power 3 Phase	Yes
Power Amps	80

Exterior

Security	Yes
Open Parking Bays	5

Sizes

Floor Size	193m ²
Land Size	5,000m ²
Building Height	6m

