



**Jarred Purchase**  
Candidate Property  
Practitioner  
Registered with PPRA  
(FFC 118 480 9)  
**0763465458**

[jarred@newpointproperty.co.za](mailto:jarred@newpointproperty.co.za)

Contact Head Office

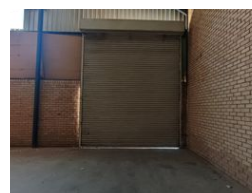
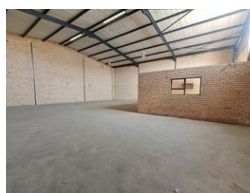
**010 0354431**

Office 40A  
Eden Meadows Complex  
1 Van Riebeeck Avenue  
Greenstone  
1609

312m<sup>2</sup> Warehouse To Let in Crown



Web Ref JP312TLCMx2



**R26,520 pm**

**Gross Monthly Rental R26,520 Excl. VAT**



0



5

Neat 312m<sup>2</sup> warehouse in a secure park with super link access.

Very neat 312m<sup>2</sup> warehouse located in a secure business park with excellent access for super links has come available for rental. The unit has an on grade roller shutter door that leads into the well sized open plan warehouse area that has fantastic height to the eaves, there is also an excellent flow of natural lighting through out the premises, the unit is all ground floor space with no mezzanine level for efficient operations, the unit is also equipped with 60 amps three phase power and has a neat toilet.

The unit has a small yet neat office area consisting of a reception area, one well sized office or boardroom, as well as a neat toilet and kitchen. The unit also has pre-paid electricity. The business park has onsite security, and the property is ideally located in the

## Features

**Zoning** Industrial

### Interior

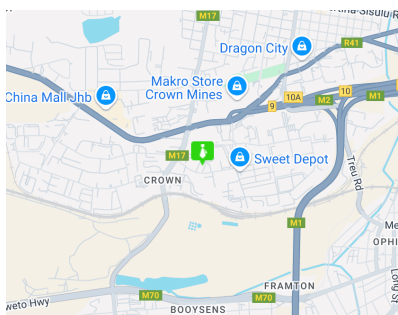
Power 3 Phase Yes  
Power Amps 60

### Exterior

Security Yes  
Open Parking Bays 5

### Sizes

Floor Size 312m<sup>2</sup>  
Land Size 8,000m<sup>2</sup>  
Building Height 6m



<https://www.newpointproperty.co.za>