



**Jarred Purchase**  
Candidate Property Practitioner  
Registered with PPRA  
(FFC 118 480 9)  
**0763465458**

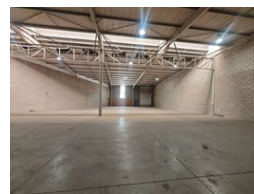
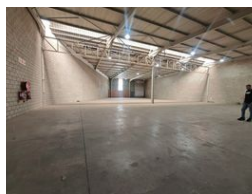
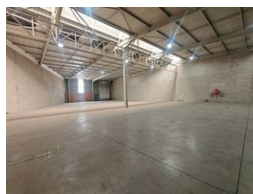
[jarred@newpointproperty.co.za](mailto:jarred@newpointproperty.co.za)

Contact Head Office

**010 0354431**

Office 40A  
Eden Meadows Complex  
1 Van Riebeeck Avenue  
Greenstone  
1609

1,064m<sup>2</sup> Warehouse To Let in City Deep



**R58,520 pm**

**Gross Monthly Rental** R58,520 Excl. VAT

4 6

## Spotless 1,064m<sup>2</sup> Warehouse in Secure City Deep Business Park – Prime Logistics Location

Now available to let, this immaculate 1,064m<sup>2</sup> warehouse offers superb functionality in a sought-after access-controlled business park in City Deep. With excellent height to the eaves, plenty of natural light, an on-grade roller shutter door, and an 80-amp three-phase power supply, this space is ideal for storage, light manufacturing, or efficient distribution.

The double-storey office component includes a modern reception, multiple private offices, a boardroom, and a kitchen—providing a complete business-ready setup. Designed for superlink access, the park features wide paved roads, ample covered parking, and 24-hour security. Conveniently located near the M1, M2, and N17 highways, this is the perfect space for businesses seeking

## Features

**Zoning** Industrial

### Interior

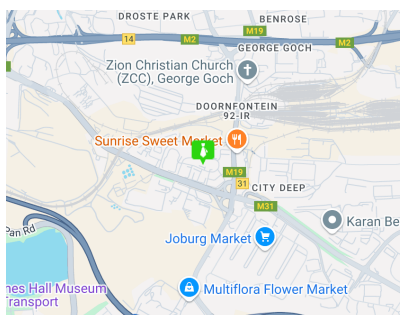
Air Conditioning	Yes
Power 3 Phase	Yes
Power Amps	80

### Exterior

Security	Yes
Covered Parking Bays	4
Open Parking Bays	6

### Sizes

Floor Size	1,064m <sup>2</sup>
Land Size	15,000m <sup>2</sup>
Building Height	8m



<https://www.newpointproperty.co.za>