



Jarred Purchase
Candidate Property
Practitioner
Registered with PPRA
(FFC 118 480 9)
0763465458

jarred@newpointproperty.co.za

Contact Head Office

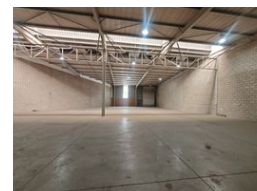
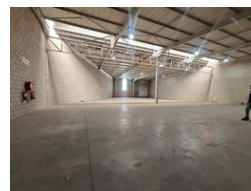
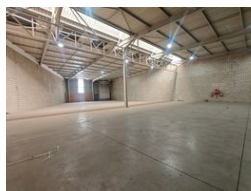
010 0354431

Office 40A
Eden Meadows Complex
1 Van Riebeeck Avenue
Greenstone
1609

1,064m² Warehouse To Let in City Deep



Web Ref CL12835



R58,520 pm

Gross Monthly Rental R58,520 Excl. VAT



Immaculate 1,064m² Warehouse To Let in Secure City Deep Business Park

This spotless 1,064m² warehouse is now available To Let in a premium, access-controlled business park in City Deep. Offering excellent height to the eaves, abundant natural light, and an on-grade roller shutter door, the space is perfect for light manufacturing, storage, or logistics. With an 80-amp, three-phase power supply and a practical open-plan layout, it's built for operational efficiency and flexibility.

The double-storey office component adds further value with a professional reception area, multiple private offices, a boardroom, and kitchen facilities. The business park is designed to accommodate superlink trucks with ease, featuring wide paved areas and ample covered parking. Ideally situated near the M1, M2, and N17 highways, this secure park offers 24-hour access and

Features

Zoning Industrial

Interior

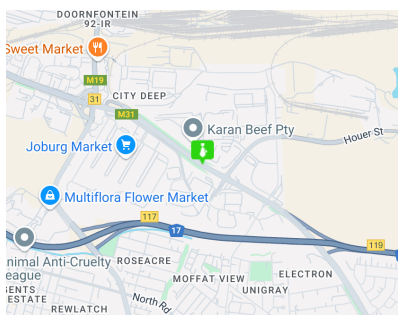
Air Conditioning	Yes
Power 3 Phase	Yes
Power Amps	80

Exterior

Security	Yes
Covered Parking Bays	4
Open Parking Bays	6

Sizes

Floor Size	1,064m ²
Land Size	15,000m ²
Building Height	8m



<https://www.newpointproperty.co.za>