



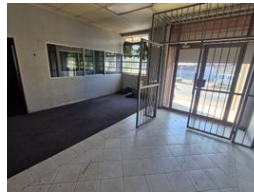
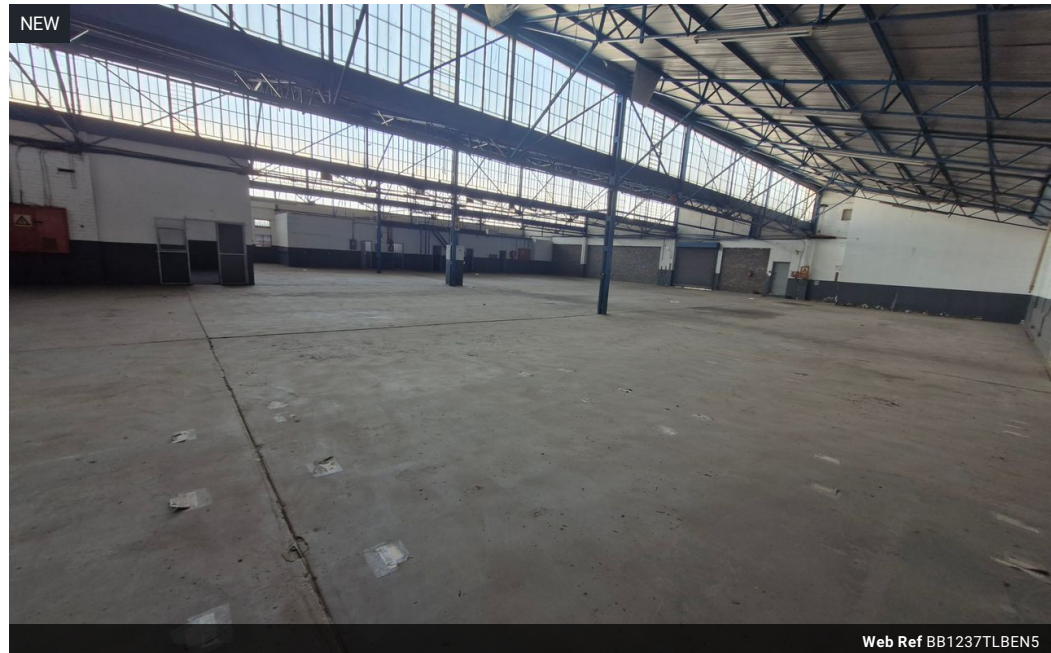
Dane Davids
0844782022
dane@newpointproperty.co.za

Contact Head Office

010 0354431

Office 40A
Eden Meadows Complex
1 Van Riebeeck Avenue
Greenstone
1609

1,237m² Warehouse To Let in Benrose



R49,678 pm

Gross Monthly Rental R49,678 Excl. VAT
Monthly Rates R1 Excl. VAT

Monthly Levy R1 Excl. VAT

0 0

Warehouse To let in Benrose Johannesburg

This warehouse to let in Benrose, Johannesburg, is located within a secure gated industrial park, offering both functionality and peace of mind. The unit is equipped with a reliable sprinkler system for added safety and fire protection, making it suitable for a variety of industrial and storage applications. A 3-meter roller door provides convenient access for loading and offloading, accommodating small to medium-sized vehicles with ease.

Inside, the warehouse offers open floor space that can be adapted to suit operational needs, with good height and practical layout for efficient workflow. The secure park ensures controlled access, well-maintained common areas, and a professional environment

Features

Zoning Industrial

Interior

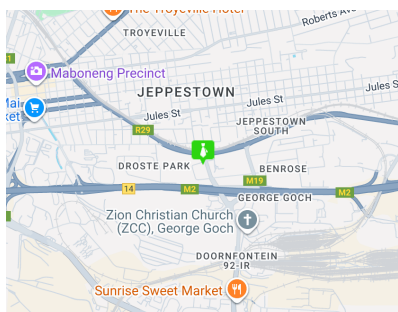
Floor Loading Cap.	10 Tn/m ²
Air Conditioning	Yes
Power 3 Phase	Yes
Power Amps	100

Exterior

Security	Yes
----------	-----

Sizes

Floor Size	1,237m ²
Land Size	2,000m ²



<https://www.newpointproperty.co.za>