



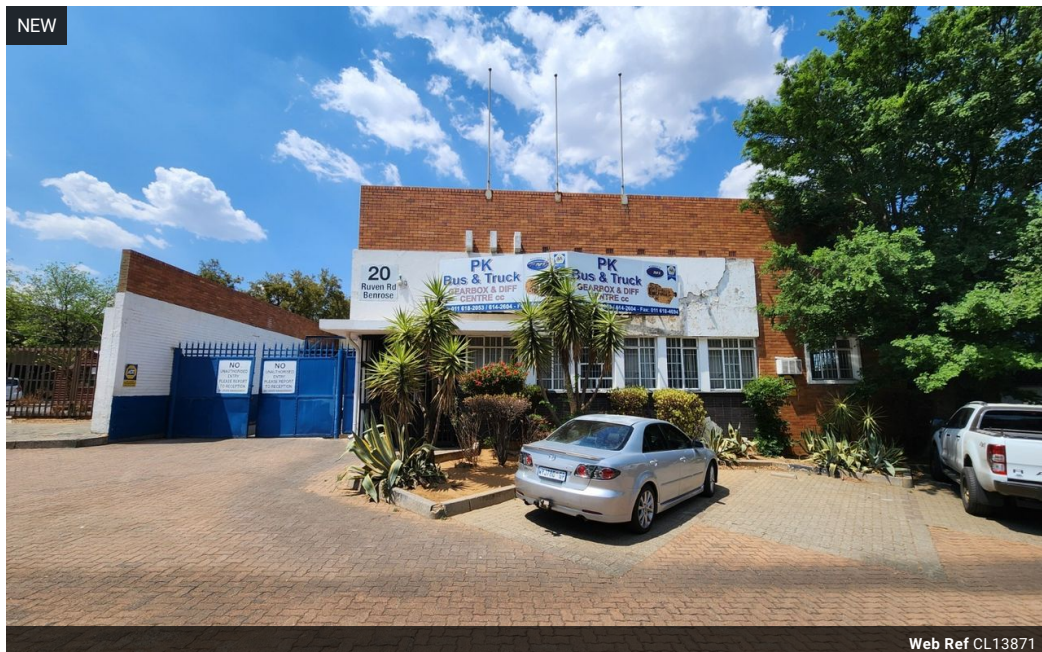
Dane Davids
0844782022
dane@newpointproperty.co.za

Contact Head Office

010 0354431

Office 40A
Eden Meadows Complex
1 Van Riebeeck Avenue
Greenstone
1609

800m² Warehouse To Let in Benrose



Web Ref CL13871



R35,000 pm

Gross Monthly Rental R35,000 Excl. VAT

2 6

Well-Positioned 800m² Freestanding Warehouse with Highway Exposure – Benrose

Take advantage of this centrally located 800m² warehouse in Benrose, offering superb visibility and direct access to the M2 highway. The property features excellent internal height, natural lighting, 120 amps of three-phase power, and two mezzanine levels for extra storage. A private yard and ample parking make for easy truck access and daily operations.

The office component includes a professional reception, multiple private offices, and a foreman's office overlooking the warehouse floor. Added conveniences include external staff facilities with a canteen, change rooms, showers, and separate ablutions, making

Features

Zoning Industrial

Interior

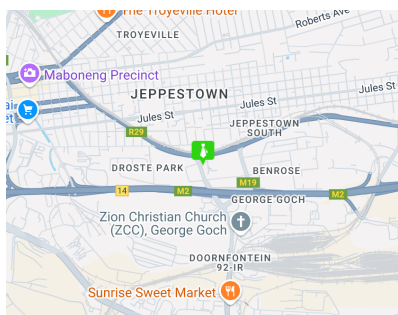
Power 3 Phase	Yes
Power Amps	120

Exterior

Covered Parking Bays	2
Open Parking Bays	6

Sizes

Floor Size	800m ²
Land Size	1,100m ²
Building Height	6m



<https://www.newpointproperty.co.za>