



Dane Davids
0844782022
dane@newpointproperty.co.za

Contact Head Office

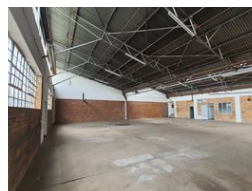
010 0354431

Office 40A
Eden Meadows Complex
1 Van Riebeeck Avenue
Greenstone
1609

926m² Warehouse To Let in Benrose



Web Ref DD92616CL



R35,207 pm

Gross Monthly Rental R35,207 Excl. VAT

 4  6

Prime 926m² Industrial Warehouse with Yard Access in Benrose

Position your business for success in this well-maintained 926m² industrial warehouse, ideally located in Benrose with easy access to major highways and public transport. This freestanding facility features high ceilings, strong 3-phase power (75 amps), and great natural lighting—perfect for a variety of industrial operations. A large private yard provides seamless truck access, plus open and covered parking bays.

The warehouse includes a high roller shutter door for direct street loading, and a modern double-storey office block with reception, kitchenette, upstairs offices, and restrooms. With excellent functionality, street visibility, and a secure layout, this property is a

Features

Zoning Industrial

Interior

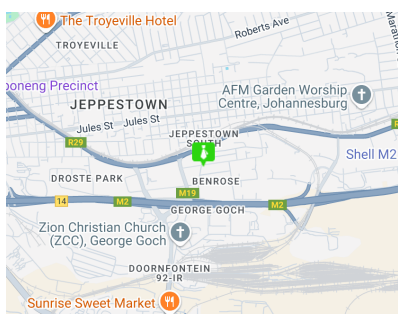
Power 3 Phase	Yes
Power Amps	75

Exterior

Security	Yes
Covered Parking Bays	4
Open Parking Bays	6

Sizes

Floor Size	926m ²
Land Size	1,000m ²
Building Height	6m



<https://www.newpointproperty.co.za>