



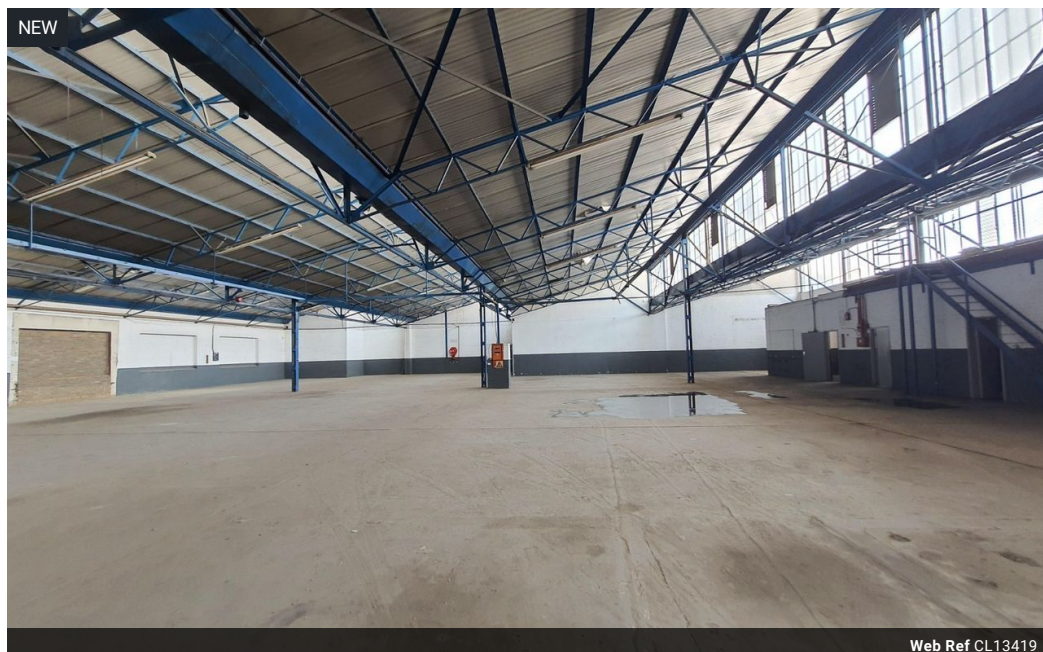
Dane Davids
0844782022
dane@newpointproperty.co.za

Contact Head Office

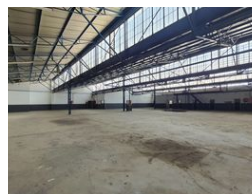
010 0354431

Office 40A
Eden Meadows Complex
1 Van Riebeeck Avenue
Greenstone
1609

1,237m² Warehouse To Let in Benrose



Web Ref CL13419



R47,006 pm

Gross Monthly Rental R47,006 Excl. VAT



0



10

Prime 1,237m² Warehouse in Benrose with High Power Supply & Highway Access

Set your business up for success with this well-positioned 1,237m² warehouse in Benrose, offering immediate access to the M2 highway and excellent logistics flow. Housed in a secure, gated industrial park with 24/7 security, the facility boasts high ceilings, abundant natural light, a 400-amp three-phase power supply, and a large roller shutter door leading to a shared yard—ideal for truck access and streamlined operations.

The property includes a neat office component with a reception area, multiple private offices, and open-plan workspace to support a dynamic team setup. On-site staff ablutions, secure parking, and proximity to public transport and local amenities round out this

Features

Zoning Industrial

Interior

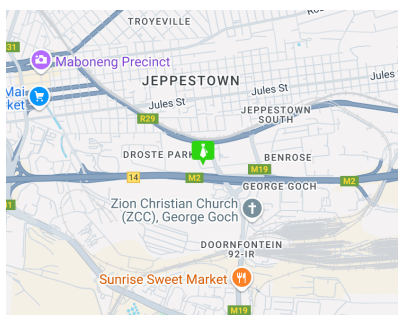
Power 3 Phase	Yes
Power Amps	400

Exterior

Security	Yes
Open Parking Bays	10

Sizes

Floor Size	1,237m ²
Land Size	1,600m ²
Building Height	6m



<https://www.newpointproperty.co.za>