



Dane Davids
0844782022
dane@newpointproperty.co.za

Contact Head Office

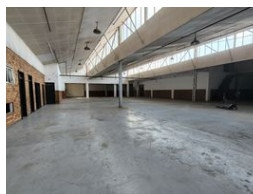
010 0354431

Office 40A
Eden Meadows Complex
1 Van Riebeeck Avenue
Greenstone
1609

2,000m² Warehouse To Let in Benrose



Web Ref CL13418



R70,000 pm

Gross Monthly Rental R70,000 Excl. VAT



Well-Positioned 2,000m² Freestanding Warehouse in Benrose with Excellent Access & Exposure

This 2,000m² freestanding warehouse in the heart of Benrose offers a functional, secure solution for businesses needing efficiency and space. Located within a controlled precinct just off the M2 Highway, the 1,700m² warehouse boasts great height, excellent natural light, three large roller shutter doors, and 120 amps of three-phase power—ideal for warehousing, logistics, or light industrial use.

The property also includes a tidy, professional office block featuring a reception, multiple private offices, two kitchens, and separate male and female ablutions. Additional warehouse staff amenities and change rooms ensure seamless day-to-day operations. Set on a prominent corner stand with ample parking, this property combines accessibility, exposure, and practicality.

Features

Zoning Industrial

Interior

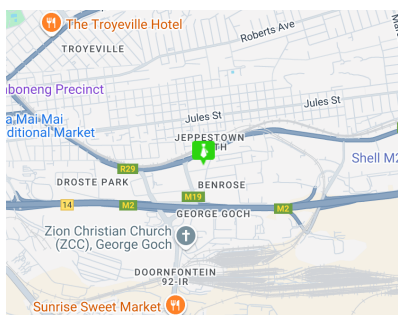
Power 3 Phase	Yes
Power Amps	120

Exterior

Security	Yes
Open Parking Bays	10

Sizes

Floor Size	2,000m ²
Land Size	2,200m ²
Building Height	5m



<https://www.newpointproperty.co.za>