



Jarred Purchase
Candidate Property
Practitioner
Registered with PPRA
(FFC 118 480 9)
0763465458

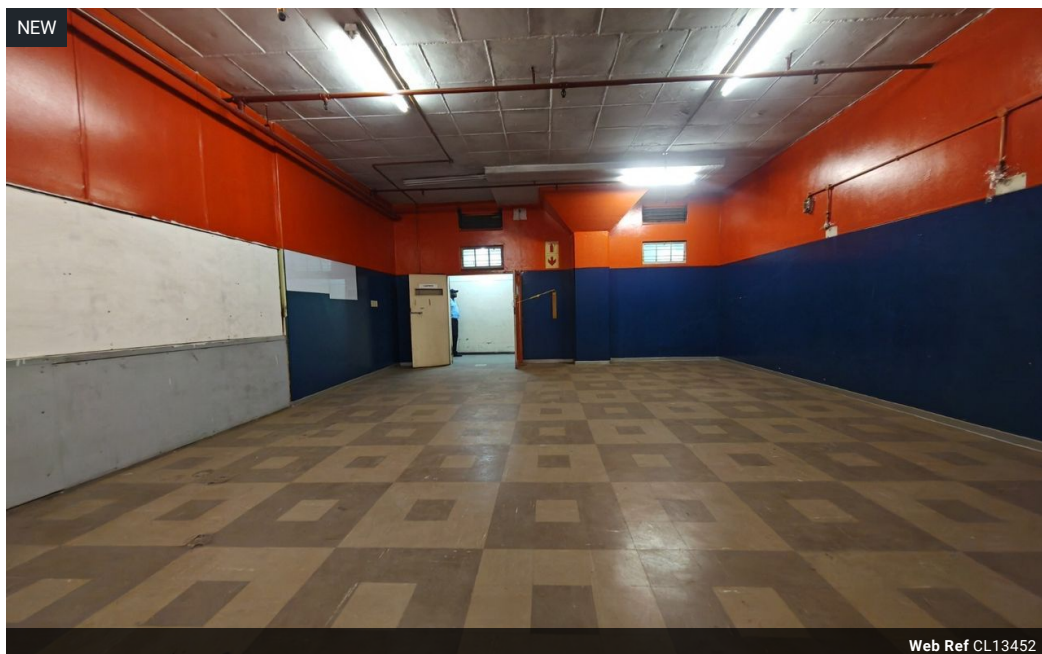
jarred@newpointproperty.co.za

Contact Head Office

010 0354431

Office 40A
Eden Meadows Complex
1 Van Riebeeck Avenue
Greenstone
1609

1,000m² Warehouse To Let in Amalgam



Web Ref CL13452



R47,000 pm

Gross Monthly Rental R47,000 Excl. VAT



0



10

Secure 1,000m² Upper-Level Warehouse with Goods Lift – Prime Location Near China Mall

Situated in a well-maintained business park just 1km from China Mall and 2km from Dragon City, this 1,000m² warehouse offers convenience and security in the heart of Johannesburg's logistics hub. Located on the upper level, the unit is serviced by a dedicated goods lift and accessed via a large paved yard suitable for super link trucks—making stock movement efficient and hassle-free.

The park boasts 24-hour on-site security, remote CCTV monitoring, and armed response, ensuring a safe environment for your operations. With quick access to Main Reef Road and surrounding routes, this facility is ideal for storage, wholesale, or distribution.

Features

Zoning Industrial

Interior

Power 3 Phase	Yes
Power Amps	80

Exterior

Security	Yes
Open Parking Bays	10

Sizes

Floor Size	1,000m ²
Land Size	30,000m ²
Building Height	8m



<https://www.newpointproperty.co.za>