



**Jarred Purchase**  
Candidate Property Practitioner  
Registered with PPRA (FFC 118 480 9)  
**0763465458**  
[jarred@newpointproperty.co.za](mailto:jarred@newpointproperty.co.za)

Contact Head Office  
**010 0354431**

Office 40A  
Eden Meadows Complex  
1 Van Riebeeck Avenue  
Greenstone  
1609



Macro locality



Web Ref CL13183



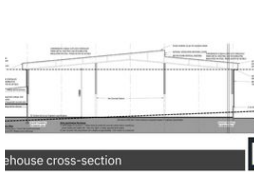
Macro locality



Perspective



Interior



Warehouse cross-section

**R650,000 pm**

**Gross Monthly Rental R650,000 Excl. VAT**

60 80

Design Your Dream Facility in Aeroton – Custom-Built Warehouses from 5,000m² to 23,000m²

Unlock a tailor-made industrial solution in the sought-after Aeroton Business Park. This premium development offers fully customizable warehouse spaces ranging from 5,000m² to 23,000m², ideal for logistics, distribution, or manufacturing operations. With 12m eaves height, full sprinkler systems, dock levelers, on-grade roller doors, and expansive paved yards, these facilities are designed for seamless, large-scale functionality.

Complementing the warehousing is a customizable AAA-grade office component, allowing you to create a professional and efficient work environment that meets your operational needs. Strategically located near Rand Show, Rifle Range, and Nasrec Roads, with direct access to the N1, N12, and M1 highways, this is your opportunity to secure a high-profile industrial footprint in

Features

**Zoning** Industrial

Interior	
Air Conditioning	Yes
Power 3 Phase	Yes
Power Amps	1200

Exterior	
Security	Yes
Covered Parking Bays	60
Open Parking Bays	80

Sizes	
Floor Size	10,000m²
Land Size	20,000m²
Building Height	14m

