



Martin Montgomery

Candidate Property Practitioner
Registered with PPRA
(FFC 121 152 3)

0818542055

martin@newpointproperty.co.za

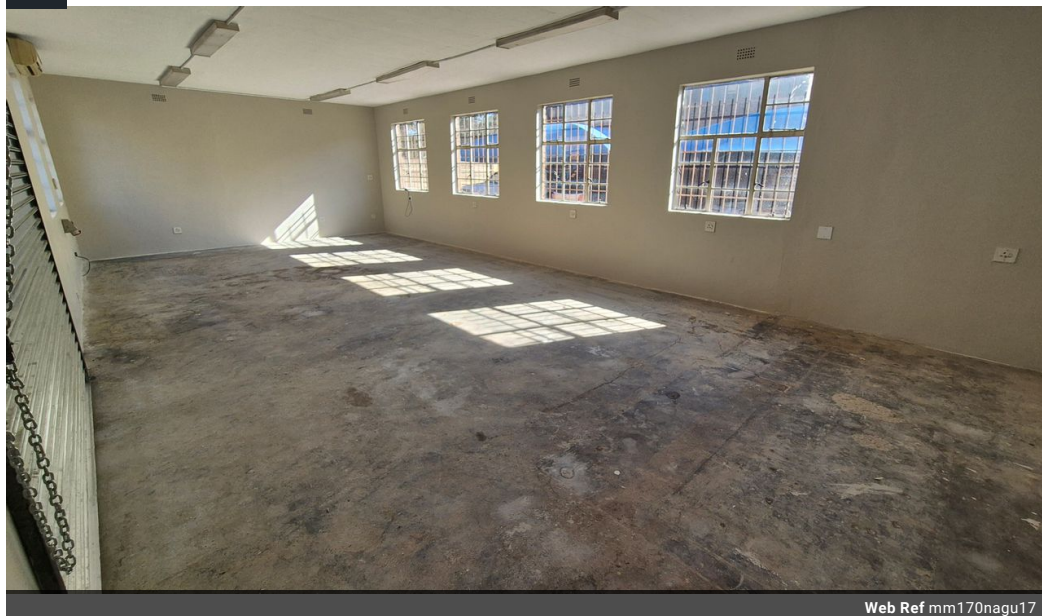
Contact Head Office

010 0354431

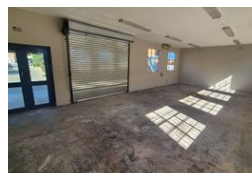
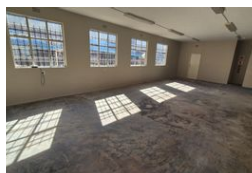
Office 40A
Eden Meadows Complex
1 Van Riebeeck Avenue
Greenstone
1609

170m² Warehouse To Let in Wadeville

NEW



Web Ref mm170nagu17



R14,000 pm

Gross Monthly Rental R14,000 Excl. VAT



0



4

170m² Industrial Unit To Let – Springs Industrial Park

170m² Industrial Unit To Let – Springs Industrial Park

A neat 170m² warehouse is available to let in the secure Springs Industrial Park. The unit offers an open floor area with good height, a roller shutter door for easy access, and a small office component with staff ablutions. The park provides 24-hour security, controlled access, and a well-maintained environment. Conveniently located near major transport routes, making it ideal for

Features

Zoning Industrial

Interior

Power 3 Phase Yes

Exterior

Open Parking Bays 4

Sizes

Floor Size 170m²
Land Size 10,000m²

