



## Martin Montgomery

Candidate Property Practitioner  
Registered with PPRA  
(FFC 121 152 3)

0818542055

[martin@newpointproperty.co.za](mailto:martin@newpointproperty.co.za)

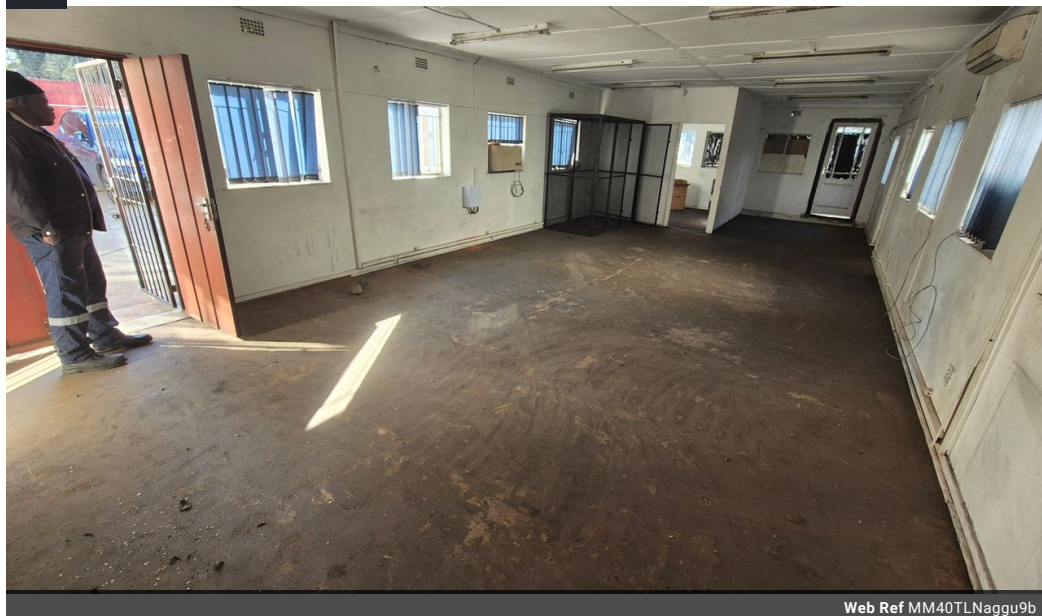
Contact Head Office

010 0354431

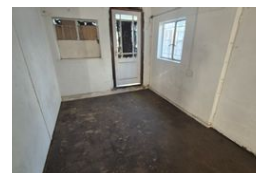
Office 40A  
Eden Meadows Complex  
1 Van Riebeeck Avenue  
Greenstone  
1609

## 40m<sup>2</sup> Warehouse To Let in Wadeville

NEW



Web Ref MM40TLNaggu9b



R4,000 pm

Gross Monthly Rental R4,000 Excl. VAT



0



4

## 40m<sup>2</sup> Warehouse to Let in Wadeville

A compact 40m<sup>2</sup> warehouse is available to let in Wadeville, offering excellent main road exposure for businesses seeking visibility and convenience. This unit is ideal for light storage, small-scale operations, or as a distribution point.

The space features easy access, a roller shutter door, and a practical open-plan layout. Located along a busy arterial road, the unit benefits from high visibility and quick access to major transport routes, including the N3 and N17 highways.

Perfect for small businesses or start-ups looking for a cost-effective, high-exposure location. Contact us today to arrange a

## Features

**Zoning** Industrial

### Interior

|               |     |
|---------------|-----|
| Power 3 Phase | Yes |
| Power Amps    | 60  |

### Exterior

|                   |     |
|-------------------|-----|
| Security          | Yes |
| Open Parking Bays | 4   |

### Sizes

|            |                      |
|------------|----------------------|
| Floor Size | 40m <sup>2</sup>     |
| Land Size  | 22,000m <sup>2</sup> |



<https://www.newpointproperty.co.za>