



Martin Montgomery

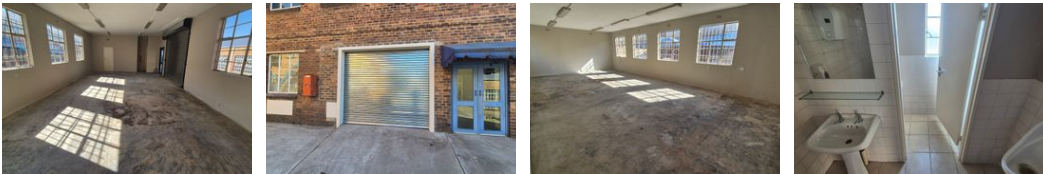
Candidate Property Practitioner
Registered with PPRA
(FFC 121 152 3)
0818542055
martin@newpointproperty.co.za

Contact Head Office

010 0354431



Office 40A
Eden Meadows Complex
1 Van Riebeeck Avenue
Greenstone
1609

170m² Warehouse To Let in Wadeville



R14,000 pm

Gross Monthly Rental R14,000 Excl. VAT

 0  4

170m2 Warehouse To Let in Wadeville

A well-maintained and practical 170m² mini warehouse is available to let in the established industrial area of Wadeville, Germiston. Perfectly suited for light industrial activities, storage, or distribution, this unit provides a secure and efficient space ideal for small to medium-sized businesses.

The warehouse offers a high roller shutter door, 3-phase power, and a clear-span layout that allows for smooth workflow and maximum usability. It also includes a small office area, kitchenette, and staff ablution facilities. Located within a secure industrial park with 24-hour security and easy access for trucks, the unit benefits from its close proximity to major transport routes, including the N3 and N17 highways.

Features

Zoning Industrial

Interior		Exterior		Sizes	
Power 3 Phase	Yes	Security	Yes	Floor Size	170m²
Power Amps	80	Open Parking Bays	4	Land Size	22,000m²
				Building Height	6m

